

Instrument Summary:

Instrument ID: iCAP Q
Serial Number: Undefined

Labbook Summary:

Path and filename: _Application Data\Workspace\LabBooks\wlw\20210825-1.imexp
Labbook created by: Administrator
Based on template:
Hardware configuration: iCAPQ1
Labbook type: eQuant
Qtegra version (last saved): 2.7.2425.154
Labbook started: 8/25/2021 4:45:06 PM
Labbook finished: 8/25/2021 5:29:38 PM

Method Summary:

Isotope	Mode	Dwell time (s)	# of Channels	Spacing	Resolution	IS
9Be	STD	0.03	3	0.1	Normal	
11B	STD	0.03	3	0.1	Normal	
24Mg	STD	0.03	3	0.1	Normal	
27Al	STD	0.03	3	0.1	Normal	
40Ca	STD	0.03	3	0.1	Normal	
51V	STD	0.03	3	0.1	Normal	
52Cr	STD	0.03	3	0.1	Normal	
55Mn	STD	0.03	3	0.1	Normal	
56Fe	STD	0.03	3	0.1	Normal	
58Ni	STD	0.03	3	0.1	Normal	
59Co	STD	0.03	3	0.1	Normal	
63Cu	STD	0.03	3	0.1	Normal	
64Zn	STD	0.03	3	0.1	Normal	
69Ga	STD	0.03	3	0.1	Normal	
75As	STD	0.03	3	0.1	Normal	
80Se	STD	0.03	3	0.1	Normal	
85Rb	STD	0.03	3	0.1	Normal	
88Sr	STD	0.03	3	0.1	Normal	
107Ag	STD	0.03	3	0.1	Normal	
114Cd	STD	0.03	3	0.1	Normal	
133Cs	STD	0.03	3	0.1	Normal	
138Ba	STD	0.03	3	0.1	Normal	
139La	STD	0.03	3	0.1	Normal	
140Ce	STD	0.03	3	0.1	Normal	
141Pr	STD	0.03	3	0.1	Normal	
142Nd	STD	0.03	3	0.1	Normal	
152Sm	STD	0.03	3	0.1	Normal	
153Eu	STD	0.03	3	0.1	Normal	
158Gd	STD	0.03	3	0.1	Normal	
164Dy	STD	0.03	3	0.1	Normal	
165Ho	STD	0.03	3	0.1	Normal	
166Er	STD	0.03	3	0.1	Normal	
169Tm	STD	0.03	3	0.1	Normal	
174Yb	STD	0.03	3	0.1	Normal	
175Lu	STD	0.03	3	0.1	Normal	
205Tl	STD	0.03	3	0.1	Normal	
208Pb	STD	0.03	3	0.1	Normal	
232Th	STD	0.03	3	0.1	Normal	
238U	STD	0.03	3	0.1	Normal	

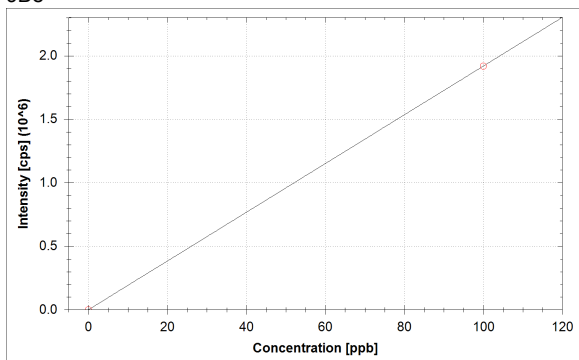
Isotope	Mode	Dwell time (s)	# of Channels	Spacing	Resolution
9Be	STD	0.03	3	0.1	Normal
11B	STD	0.03	3	0.1	Normal
24Mg	STD	0.03	3	0.1	Normal
27Al	STD	0.03	3	0.1	Normal
40Ca	STD	0.03	3	0.1	Normal
51V	STD	0.03	3	0.1	Normal
52Cr	STD	0.03	3	0.1	Normal
55Mn	STD	0.03	3	0.1	Normal
56Fe	STD	0.03	3	0.1	Normal
58Ni	STD	0.03	3	0.1	Normal
59Co	STD	0.03	3	0.1	Normal
63Cu	STD	0.03	3	0.1	Normal
64Zn	STD	0.03	3	0.1	Normal
69Ga	STD	0.03	3	0.1	Normal
75As	STD	0.03	3	0.1	Normal
80Se	STD	0.03	3	0.1	Normal

Isotope	Mode	Dwell time (s)	# of Channels	Spacing	Resolution
85Rb	STD	0.03	3	0.1	Normal
88Sr	STD	0.03	3	0.1	Normal
107Ag	STD	0.03	3	0.1	Normal
114Cd	STD	0.03	3	0.1	Normal
133Cs	STD	0.03	3	0.1	Normal
138Ba	STD	0.03	3	0.1	Normal
139La	STD	0.03	3	0.1	Normal
140Ce	STD	0.03	3	0.1	Normal
141Pr	STD	0.03	3	0.1	Normal
142Nd	STD	0.03	3	0.1	Normal
152Sm	STD	0.03	3	0.1	Normal
153Eu	STD	0.03	3	0.1	Normal
158Gd	STD	0.03	3	0.1	Normal
164Dy	STD	0.03	3	0.1	Normal
165Ho	STD	0.03	3	0.1	Normal
166Er	STD	0.03	3	0.1	Normal
169Tm	STD	0.03	3	0.1	Normal
174Yb	STD	0.03	3	0.1	Normal
175Lu	STD	0.03	3	0.1	Normal
205Tl	STD	0.03	3	0.1	Normal
208Pb	STD	0.03	3	0.1	Normal
232Th	STD	0.03	3	0.1	Normal
238U	STD	0.03	3	0.1	Normal

No. of sweeps	Time per sweep[s]	Time per main run[s]
10	3.51	35.1

Calibration Curves:

9Be



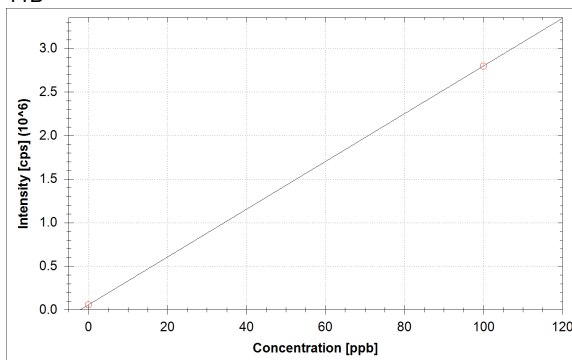
$$f(x) = 19185.8427 \cdot x + 13.3334$$

$$R^2 = 1.0000$$

$$\text{BEC} = 0.001 \text{ ppb}$$

$$\text{LoD} = \text{N/A}$$

11B



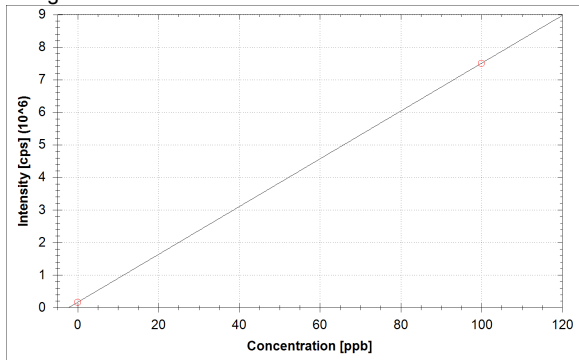
$$f(x) = 27408.4596 \cdot x + 56163.1320$$

$$R^2 = 1.0000$$

$$\text{BEC} = 2.049 \text{ ppb}$$

$$\text{LoD} = \text{N/A}$$

24Mg



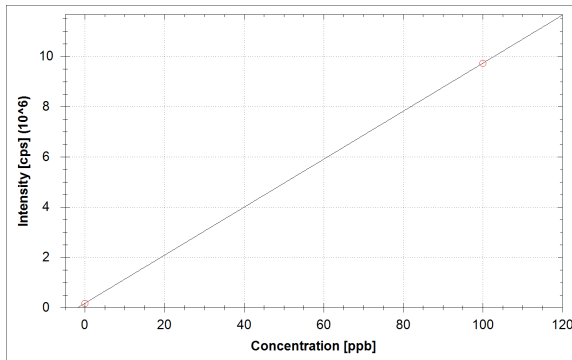
$$f(x) = 73423.7561 \cdot x + 162316.0552$$

$$R^2 = 1.0000$$

$$\text{BEC} = 2.211 \text{ ppb}$$

$$\text{LoD} = \text{N/A}$$

27Al



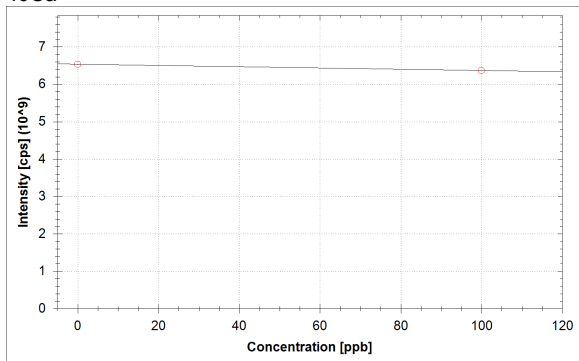
$$f(x) = 95587.4756 \cdot x + 170154.1183$$

$$R^2 = 1.0000$$

$$\text{BEC} = 1.780 \text{ ppb}$$

$$\text{LoD} = \text{N/A}$$

40Ca



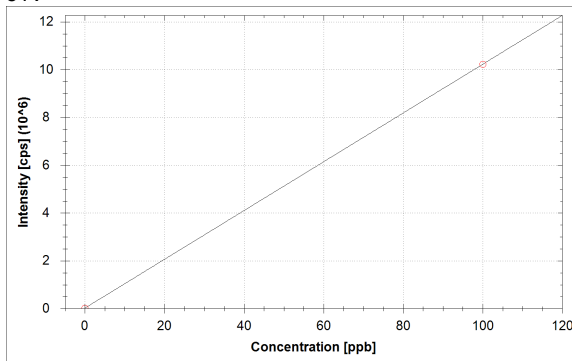
$$f(x) = -1680655.3602 \cdot x + 6535398243.6327$$

$$R^2 = 1.0000$$

$$\text{BEC} = -3888.601 \text{ ppb}$$

$$\text{LoD} = \text{N/A}$$

51V



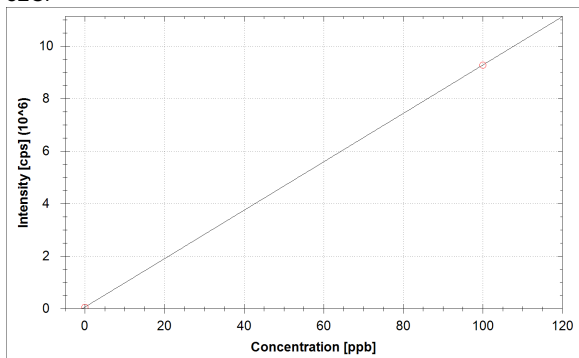
$$f(x) = 102091.1490 \cdot x + 17308.7060$$

$$R^2 = 1.0000$$

$$\text{BEC} = 0.170 \text{ ppb}$$

$$\text{LoD} = \text{N/A}$$

52Cr



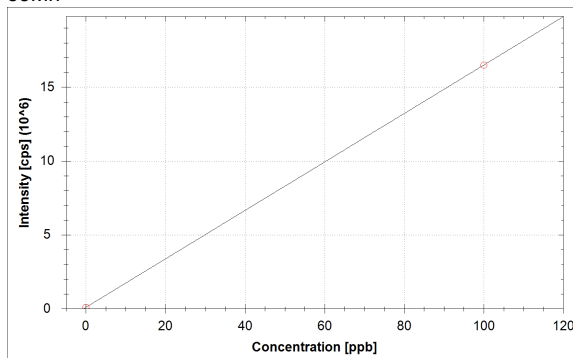
$$f(x) = 92212.8762 \cdot x + 59786.1683$$

$$R^2 = 1.0000$$

$$\text{BEC} = 0.648 \text{ ppb}$$

$$\text{LoD} = \text{N/A}$$

55Mn



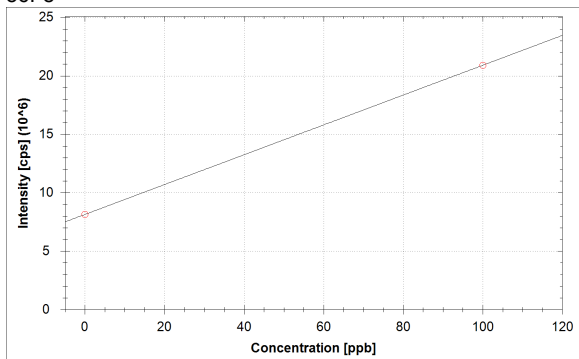
$$f(x) = 163998.4465 \cdot x + 91145.1495$$

$$R^2 = 1.0000$$

$$\text{BEC} = 0.556 \text{ ppb}$$

$$\text{LoD} = \text{N/A}$$

56Fe



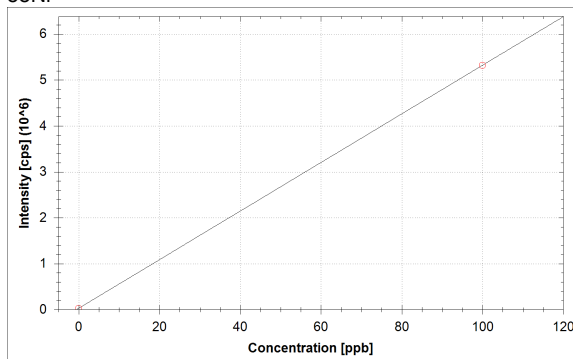
$$f(x) = 127639.2469 \cdot x + 8137982.9850$$

$$R^2 = 1.0000$$

$$\text{BEC} = 63.758 \text{ ppb}$$

$$\text{LoD} = \text{N/A}$$

58Ni



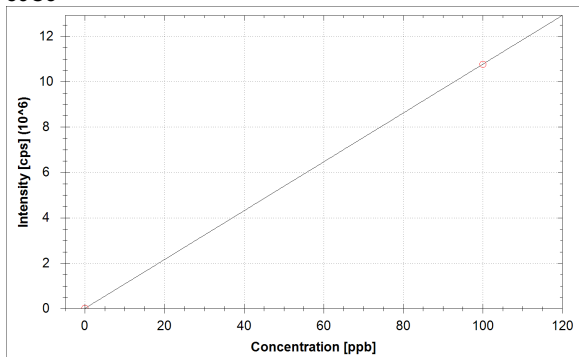
$$f(x) = 52950.8521 \cdot x + 26912.3204$$

$$R^2 = 1.0000$$

$$\text{BEC} = 0.508 \text{ ppb}$$

$$\text{LoD} = \text{N/A}$$

59Co



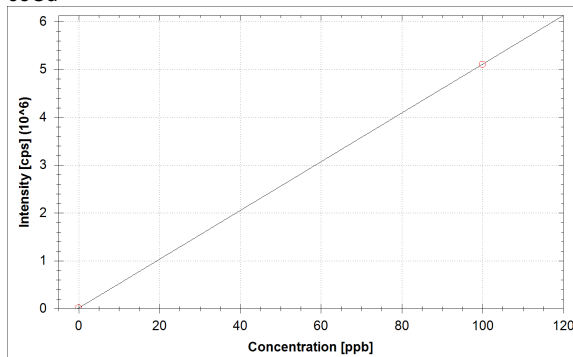
$$f(x) = 107612.9929 \cdot x + 4960.9947$$

$$R^2 = 1.0000$$

$$\text{BEC} = 0.046 \text{ ppb}$$

$$\text{LoD} = \text{N/A}$$

63Cu



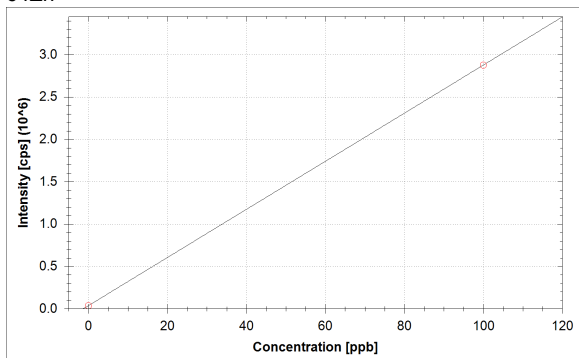
$$f(x) = 50985.7185 \cdot x + 10330.9652$$

$$R^2 = 1.0000$$

$$\text{BEC} = 0.203 \text{ ppb}$$

$$\text{LoD} = \text{N/A}$$

64Zn



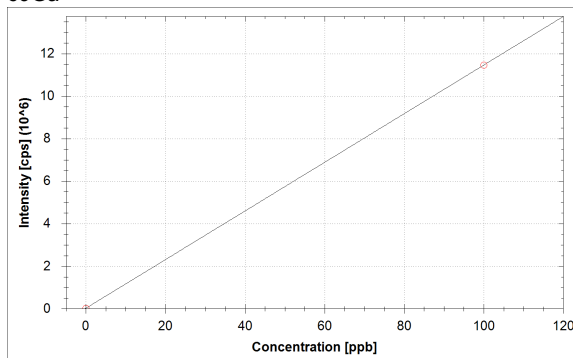
$$f(x) = 28399.1551 \cdot x + 36727.2743$$

$$R^2 = 1.0000$$

$$\text{BEC} = 1.293 \text{ ppb}$$

$$\text{LoD} = \text{N/A}$$

69Ga



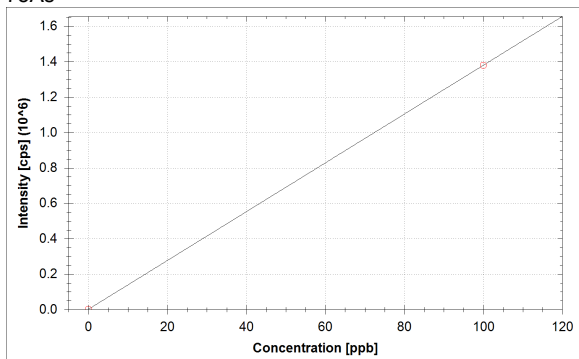
$$f(x) = 114372.4102 \cdot x + 21248.1959$$

$$R^2 = 1.0000$$

$$\text{BEC} = 0.186 \text{ ppb}$$

$$\text{LoD} = \text{N/A}$$

75As



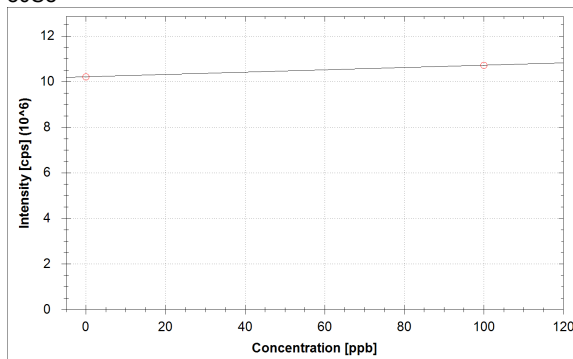
$$f(x) = 13785.2927 \cdot x + 1610.1057$$

$$R^2 = 1.0000$$

$$\text{BEC} = 0.117 \text{ ppb}$$

$$\text{LoD} = \text{N/A}$$

80Se



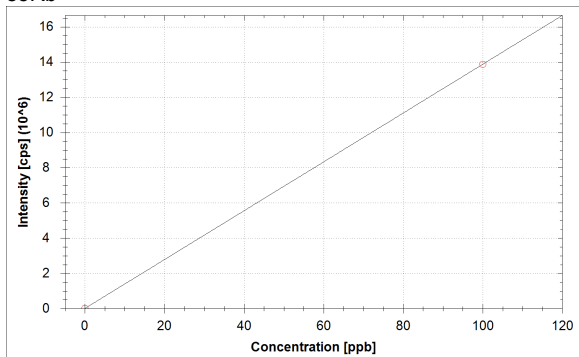
$$f(x) = 5072.1003 \cdot x + 10206898.7330$$

$$R^2 = 1.0000$$

$$\text{BEC} = 2012.361 \text{ ppb}$$

$$\text{LoD} = \text{N/A}$$

85Rb



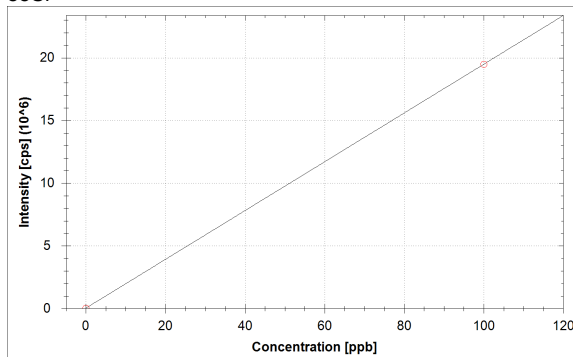
$$f(x) = 138693.9263 \cdot x + 5397.8476$$

$$R^2 = 1.0000$$

$$\text{BEC} = 0.039 \text{ ppb}$$

$$\text{LoD} = \text{N/A}$$

88Sr



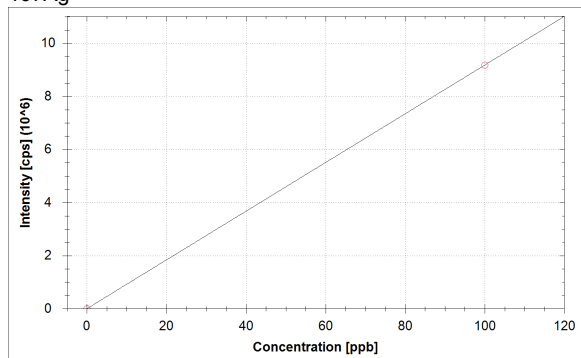
$$f(x) = 194516.3328 \cdot x + 31235.7436$$

$$R^2 = 1.0000$$

$$\text{BEC} = 0.161 \text{ ppb}$$

$$\text{LoD} = \text{N/A}$$

107Ag



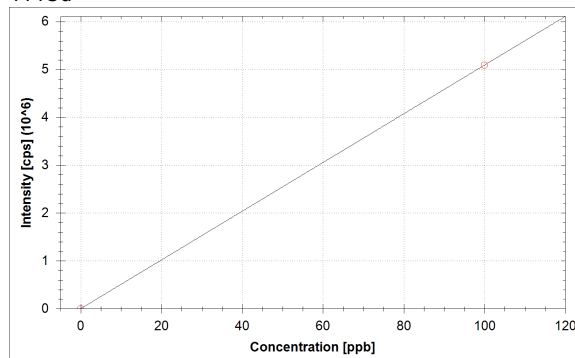
$$f(x) = 91764.2473 \cdot x + 2656.9523$$

$$R^2 = 1.0000$$

$$\text{BEC} = 0.029 \text{ ppb}$$

$$\text{LoD} = \text{N/A}$$

114Cd



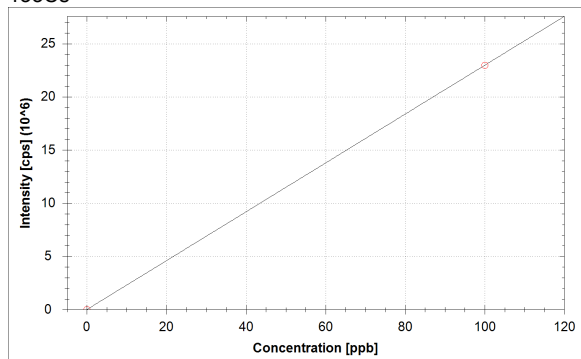
$$f(x) = 50916.8771 \cdot x + 1293.4020$$

$$R^2 = 1.0000$$

$$\text{BEC} = 0.025 \text{ ppb}$$

$$\text{LoD} = \text{N/A}$$

133Cs



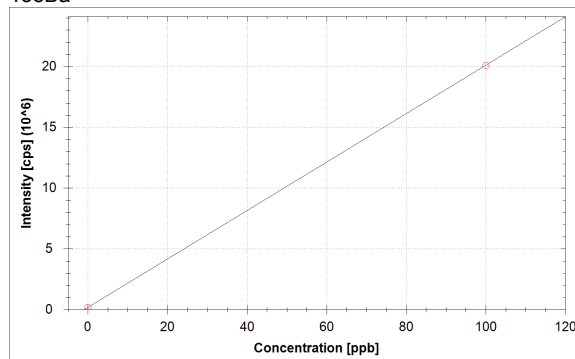
$$f(x) = 229723.4417 \cdot x + 366.6722$$

$$R^2 = 1.0000$$

$$\text{BEC} = 0.002 \text{ ppb}$$

$$\text{LoD} = \text{N/A}$$

138Ba



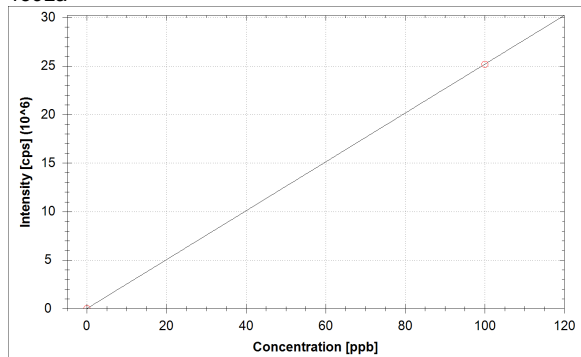
$$f(x) = 199315.4575 \cdot x + 170717.7707$$

$$R^2 = 1.0000$$

$$\text{BEC} = 0.857 \text{ ppb}$$

$$\text{LoD} = \text{N/A}$$

139La



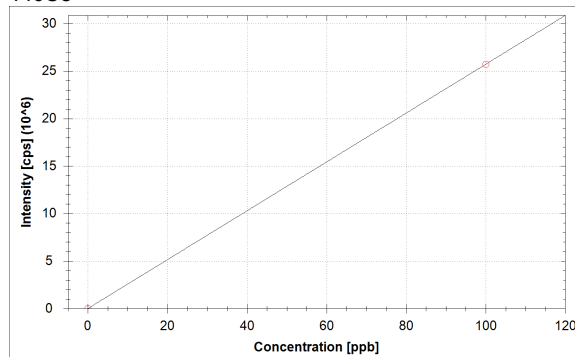
$$f(x) = 251751.2398 \cdot x + 310.0041$$

$$R^2 = 1.0000$$

$$\text{BEC} = 0.001 \text{ ppb}$$

$$\text{LoD} = \text{N/A}$$

140Ce



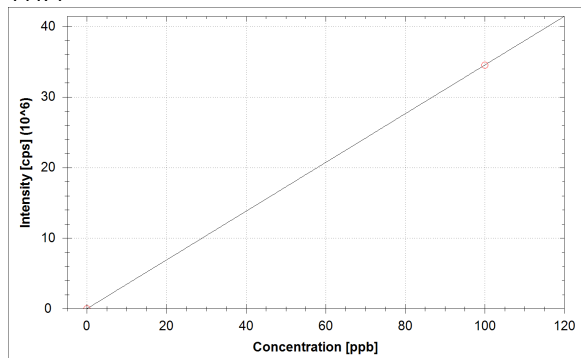
$$f(x) = 257152.4207 \cdot x + 740.0228$$

$$R^2 = 1.0000$$

$$\text{BEC} = 0.003 \text{ ppb}$$

$$\text{LoD} = \text{N/A}$$

141Pr



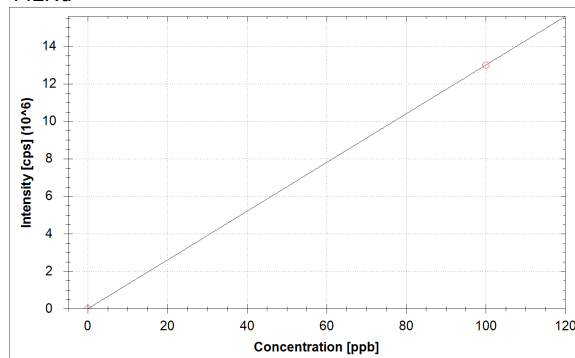
$$f(x) = 345242.5587x + 146.6676$$

$$R^2 = 1.0000$$

$$\text{BEC} = 0.000 \text{ ppb}$$

$$\text{LoD} = \text{N/A}$$

142Nd



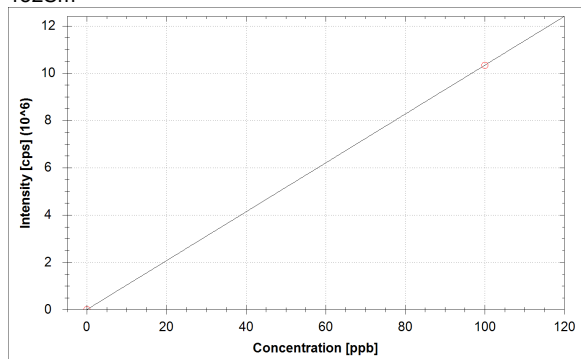
$$f(x) = 129968.1113x + 203.3352$$

$$R^2 = 1.0000$$

$$\text{BEC} = 0.002 \text{ ppb}$$

$$\text{LoD} = \text{N/A}$$

152Sm



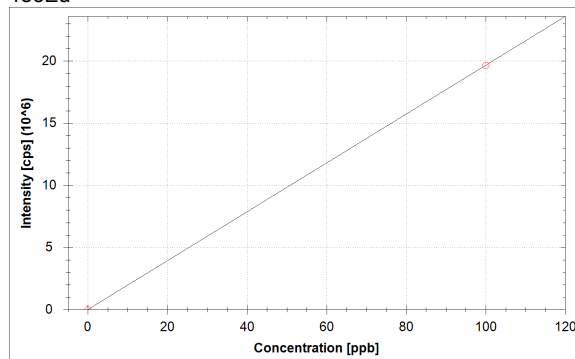
$$f(x) = 103336.6998x + 50.0002$$

$$R^2 = 1.0000$$

$$\text{BEC} = 0.000 \text{ ppb}$$

$$\text{LoD} = \text{N/A}$$

153Eu



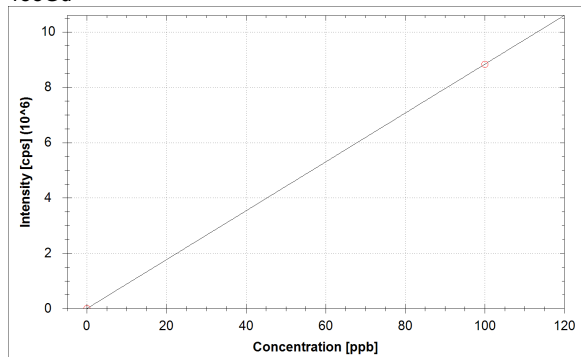
$$f(x) = 196602.2174x + 66.6669$$

$$R^2 = 1.0000$$

$$\text{BEC} = 0.000 \text{ ppb}$$

$$\text{LoD} = \text{N/A}$$

158Gd



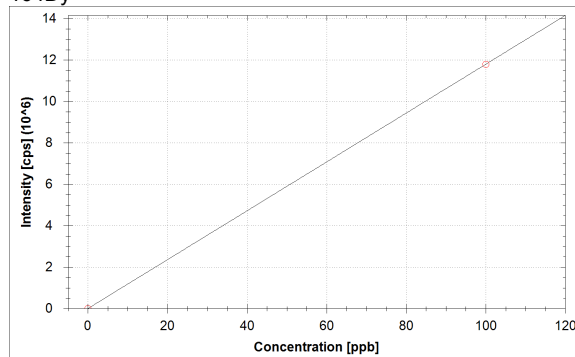
$$f(x) = 88301.4580x + 16.6667$$

$$R^2 = 1.0000$$

$$\text{BEC} = 0.000 \text{ ppb}$$

$$\text{LoD} = \text{N/A}$$

164Dy

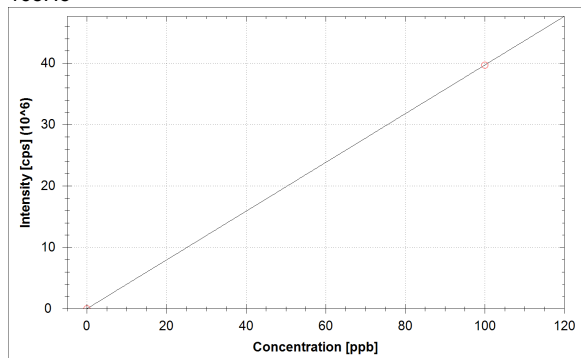


$$f(x) = 117938.0197x + 120.0007$$

$$R^2 = 1.0000$$

$$\text{BEC} = 0.001 \text{ ppb}$$

$$\text{LoD} = \text{N/A}$$

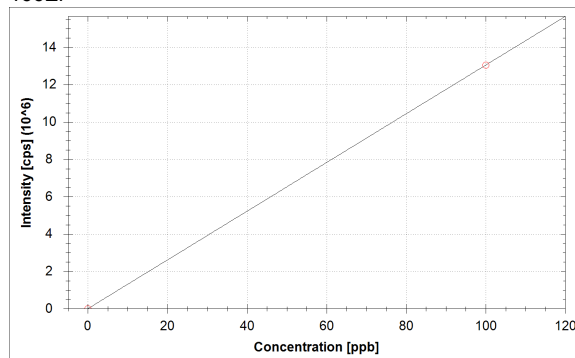
¹⁶⁵Ho

$$f(x) = 396767.2019 \cdot x + 33.3334$$

$$R^2 = 1.0000$$

$$\text{BEC} = 0.000 \text{ ppb}$$

$$\text{LoD} = \text{N/A}$$

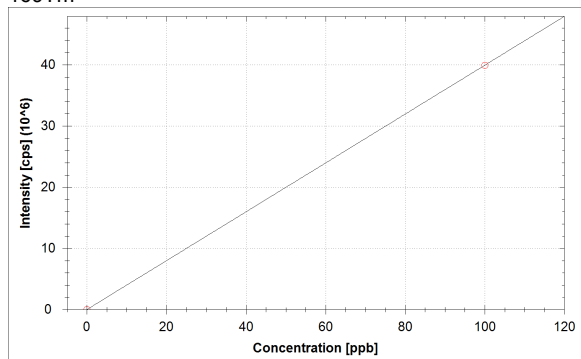
¹⁶⁶Er

$$f(x) = 130458.3905 \cdot x + 2610.3146$$

$$R^2 = 1.0000$$

$$\text{BEC} = 0.020 \text{ ppb}$$

$$\text{LoD} = \text{N/A}$$

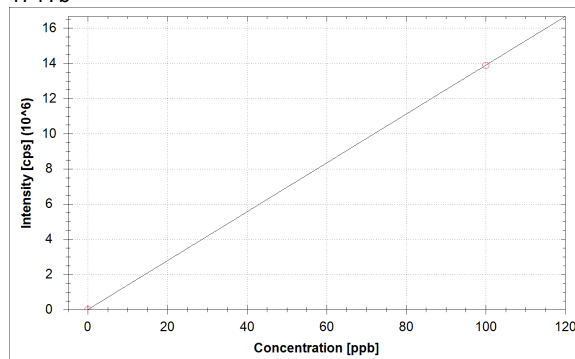
¹⁶⁹Tm

$$f(x) = 399199.0891 \cdot x + 66.6669$$

$$R^2 = 1.0000$$

$$\text{BEC} = 0.000 \text{ ppb}$$

$$\text{LoD} = \text{N/A}$$

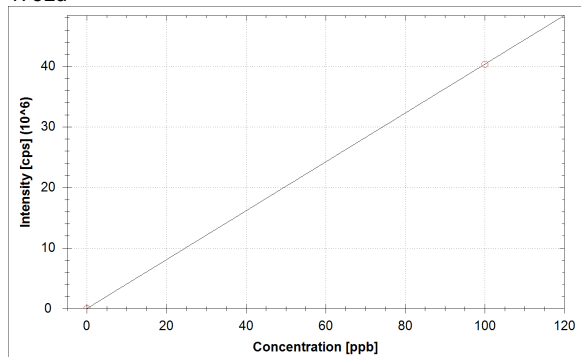
¹⁷⁴Yb

$$f(x) = 138903.5780 \cdot x + 13.3334$$

$$R^2 = 1.0000$$

$$\text{BEC} = 0.000 \text{ ppb}$$

$$\text{LoD} = \text{N/A}$$

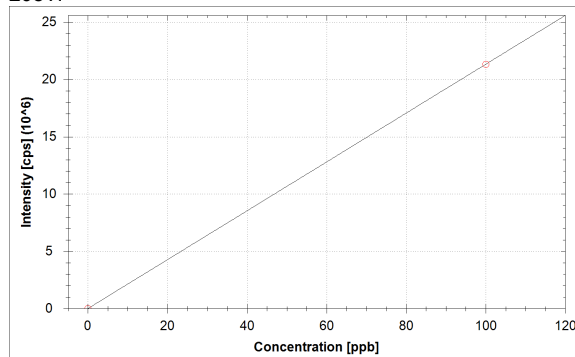
¹⁷⁵Lu

$$f(x) = 403252.3754 \cdot x + 23.3334$$

$$R^2 = 1.0000$$

$$\text{BEC} = 0.000 \text{ ppb}$$

$$\text{LoD} = \text{N/A}$$

²⁰⁵Tl

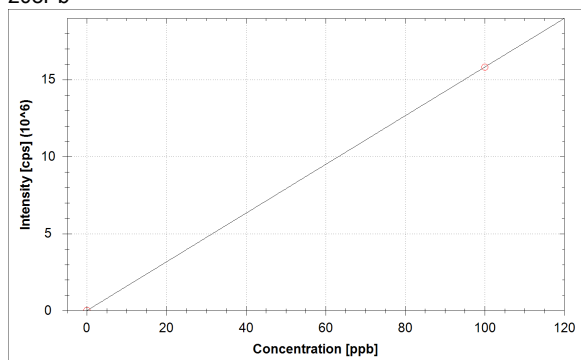
$$f(x) = 213310.1975 \cdot x + 10.0000$$

$$R^2 = 1.0000$$

$$\text{BEC} = 0.000 \text{ ppb}$$

$$\text{LoD} = \text{N/A}$$

208Pb



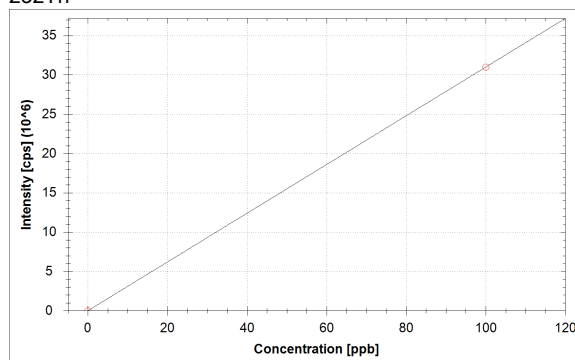
$$f(x) = 158083.2008 \cdot x + 7859.1549$$

$$R^2 = 1.0000$$

$$\text{BEC} = 0.050 \text{ ppb}$$

$$\text{LoD} = \text{N/A}$$

232Th



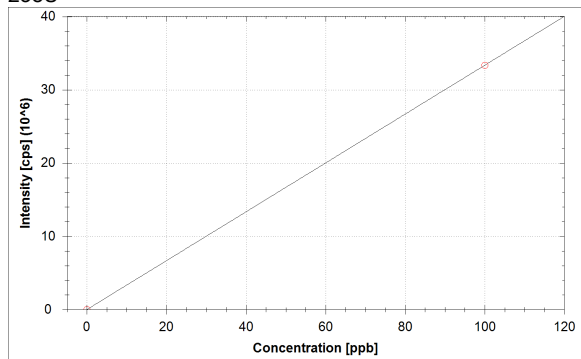
$$f(x) = 309889.5700 \cdot x + 1610.1103$$

$$R^2 = 1.0000$$

$$\text{BEC} = 0.005 \text{ ppb}$$

$$\text{LoD} = \text{N/A}$$

238U



$$f(x) = 333542.6543 \cdot x + 233.3361$$

$$R^2 = 1.0000$$

$$\text{BEC} = 0.001 \text{ ppb}$$

$$\text{LoD} = \text{N/A}$$

Standards:

Analysis Index: 3
Analysis Name: std1
Analysis Type: STD
Analysis Started at: 8/25/2021 4:50:27 PM
Standard (Stock): std1
Standard DF: 1

Category	Concentration average	Concentration RSD	Standard Concentration
9Be	100.000 ppb		100.000 ppb
11B	100.000 ppb		100.000 ppb
24Mg	100.000 ppb		100.000 ppb
27Al	100.000 ppb		100.000 ppb
40Ca	100.000 ppb		100.000 ppb
51V	100.000 ppb		100.000 ppb
52Cr	100.000 ppb		100.000 ppb
55Mn	100.000 ppb		100.000 ppb
56Fe	100.000 ppb		100.000 ppb
58Ni	100.000 ppb		100.000 ppb
59Co	100.000 ppb		100.000 ppb
63Cu	100.000 ppb		100.000 ppb
64Zn	100.000 ppb		100.000 ppb
69Ga	100.000 ppb		100.000 ppb
75As	100.000 ppb		100.000 ppb
80Se	100.000 ppb		100.000 ppb
85Rb	100.000 ppb		100.000 ppb
88Sr	100.000 ppb		100.000 ppb
107Ag	100.000 ppb		100.000 ppb
114Cd	100.000 ppb		100.000 ppb
133Cs	100.000 ppb		100.000 ppb
138Ba	100.000 ppb		100.000 ppb
139La	100.000 ppb		100.000 ppb
140Ce	100.000 ppb		100.000 ppb
141Pr	100.000 ppb		100.000 ppb
142Nd	100.000 ppb		100.000 ppb
152Sm	100.000 ppb		100.000 ppb
153Eu	100.000 ppb		100.000 ppb
158Gd	100.000 ppb		100.000 ppb
164Dy	100.000 ppb		100.000 ppb
165Ho	100.000 ppb		100.000 ppb
166Er	100.000 ppb		100.000 ppb
169Tm	100.000 ppb		100.000 ppb
174Yb	100.000 ppb		100.000 ppb
175Lu	100.000 ppb		100.000 ppb
205Tl	100.000 ppb		100.000 ppb
208Pb	100.000 ppb		100.000 ppb
232Th	100.000 ppb		100.000 ppb
238U	100.000 ppb		100.000 ppb

Sample List Summary:

Instrument ID: iCAP Q

Index:	Label:	Main Runs:	Survey Runs:	Start Time:	User name:
1	water	3	0	8/25/2021 4:45:10 PM	WINDOWS-UPCI4ER\Administrator
2	blk	1	0	8/25/2021 4:48:07 PM	WINDOWS-UPCI4ER\Administrator
3	std1	1	0	8/25/2021 4:50:27 PM	WINDOWS-UPCI4ER\Administrator
4	179212jian	1	0	8/25/2021 4:52:37 PM	WINDOWS-UPCI4ER\Administrator
5	04675jian	1	0	8/25/2021 4:54:35 PM	WINDOWS-UPCI4ER\Administrator
6	045713jian	1	0	8/25/2021 4:56:25 PM	WINDOWS-UPCI4ER\Administrator
7	046754jian	1	0	8/25/2021 4:58:22 PM	WINDOWS-UPCI4ER\Administrator
8	046747jian	1	0	8/25/2021 5:00:22 PM	WINDOWS-UPCI4ER\Administrator
9	051946jian	1	0	8/25/2021 5:02:10 PM	WINDOWS-UPCI4ER\Administrator
10	046317jian	1	0	8/25/2021 5:04:06 PM	WINDOWS-UPCI4ER\Administrator
11	033892jian	1	0	8/25/2021 5:06:01 PM	WINDOWS-UPCI4ER\Administrator
12	046757jian	1	0	8/25/2021 5:07:48 PM	WINDOWS-UPCI4ER\Administrator
13	046314jian	1	0	8/25/2021 5:09:35 PM	WINDOWS-UPCI4ER\Administrator
14	179396jian	1	0	8/25/2021 5:11:24 PM	WINDOWS-UPCI4ER\Administrator
15	046288jian	1	0	8/25/2021 5:13:18 PM	WINDOWS-UPCI4ER\Administrator
16	179421jian	1	0	8/25/2021 5:15:04 PM	WINDOWS-UPCI4ER\Administrator
17	04745jian	1	0	8/25/2021 5:16:54 PM	WINDOWS-UPCI4ER\Administrator
18	04628ti	1	0	8/25/2021 5:18:41 PM	WINDOWS-UPCI4ER\Administrator
19	033892ti	1	0	8/25/2021 5:20:26 PM	WINDOWS-UPCI4ER\Administrator
20	046750ti	1	0	8/25/2021 5:22:12 PM	WINDOWS-UPCI4ER\Administrator
21	179212ti	1	0	8/25/2021 5:23:58 PM	WINDOWS-UPCI4ER\Administrator
22	15028jian	1	0	8/25/2021 5:25:45 PM	WINDOWS-UPCI4ER\Administrator
23	15024jian	1	0	8/25/2021 5:27:36 PM	WINDOWS-UPCI4ER\Administrator

Sample Summary

Instrument ID: iCAP Q

Analysis index: 1

Analysis name: water

Analysis started at: 8/25/2021 4:45:10 PM

User name: WINDOWS-UPCI4ER\Administrator

Category	Concentration average	Concentration RSD
9Be	0.000 ppb	229.1 %
11B	-1.971 ppb	0.2 %
24Mg	-2.144 ppb	0.0 %
27Al	-1.175 ppb	1.6 %
40Ca	-436.015 ppb	8.9 %
51V	-0.016 ppb	40.4 %
52Cr	-0.044 ppb	3.8 %
55Mn	-0.231 ppb	1.8 %
56Fe	-10.976 ppb	12.8 %
58Ni	-0.093 ppb	4.6 %
59Co	0.000 ppb	283.7 %
63Cu	-0.178 ppb	0.8 %
64Zn	-1.121 ppb	0.2 %
69Ga	-0.014 ppb	13.3 %
75As	0.010 ppb	48.0 %
80Se	50.239 ppb	112.7 %
85Rb	-0.004 ppb	40.1 %
88Sr	-0.158 ppb	0.0 %
107Ag	-0.024 ppb	2.7 %
114Cd	-0.023 ppb	0.8 %
133Cs	-0.001 ppb	12.2 %
138Ba	-0.852 ppb	0.0 %
139La	-0.001 ppb	1.3 %
140Ce	-0.003 ppb	1.4 %
141Pr	0.000 ppb	26.5 %
142Nd	-0.001 ppb	3.3 %
152Sm	0.000 ppb	65.5 %
153Eu	0.000 ppb	66.6 %
158Gd	0.000 ppb	86.6 %
164Dy	-0.001 ppb	1.7 %
165Ho	0.000 ppb	74.2 %
166Er	-0.020 ppb	0.3 %
169Tm	0.000 ppb	39.0 %
174Yb	0.000 ppb	17.3 %
175Lu	0.000 ppb	12.4 %
205Tl	0.000 ppb	
208Pb	-0.049 ppb	0.2 %
232Th	-0.005 ppb	0.1 %
238U	-0.001 ppb	0.8 %

Category	Concentration average	Intensity average	Intensity RSD
9Be	0.000 ppb	11 cps	45.8 %
11B	-1.971 ppb	2,139 cps	4.2 %
24Mg	-2.144 ppb	4,869 cps	1.1 %
27Al	-1.175 ppb	57,802 cps	3.1 %
40Ca	-436.015 ppb	7,268,188,783 cps	0.9 %
51V	-0.016 ppb	15,705 cps	4.1 %
52Cr	-0.044 ppb	55,687 cps	0.3 %
55Mn	-0.231 ppb	53,330 cps	1.2 %
56Fe	-10.976 ppb	6,736,986 cps	2.7 %

Category	Concentration average	Intensity average	Intensity RSD
58Ni	-0.093 ppb	21,995 cps	1.0 %
59Co	0.000 ppb	4,929 cps	1.9 %
63Cu	-0.178 ppb	1,239 cps	6.1 %
64Zn	-1.121 ppb	4,892 cps	1.1 %
69Ga	-0.014 ppb	19,633 cps	1.1 %
75As	0.010 ppb	1,742 cps	3.6 %
80Se	50.239 ppb	10,461,715 cps	2.7 %
85Rb	-0.004 ppb	4,799 cps	5.0 %
88Sr	-0.158 ppb	539 cps	2.6 %
107Ag	-0.024 ppb	448 cps	13.2 %
114Cd	-0.023 ppb	144 cps	6.7 %
133Cs	-0.001 ppb	209 cps	9.2 %
138Ba	-0.852 ppb	942 cps	2.1 %
139La	-0.001 ppb	60 cps	5.6 %
140Ce	-0.003 ppb	36 cps	28.6 %
141Pr	0.000 ppb	113 cps	7.8 %
142Nd	-0.001 ppb	30 cps	19.2 %
152Sm	0.000 ppb	27 cps	57.3 %
153Eu	0.000 ppb	52 cps	18.4 %
158Gd	0.000 ppb	14 cps	13.3 %
164Dy	-0.001 ppb	9 cps	21.7 %
165Ho	0.000 ppb	19 cps	56.7 %
166Er	-0.020 ppb	10 cps	88.2 %
169Tm	0.000 ppb	84 cps	8.2 %
174Yb	0.000 ppb	2 cps	86.6 %
175Lu	0.000 ppb	8 cps	24.7 %
205Tl	0.000 ppb	10 cps	0.0 %
208Pb	-0.049 ppb	91 cps	15.2 %
232Th	-0.005 ppb	4 cps	43.3 %
238U	-0.001 ppb	1 cps	173.2 %

Sample Summary

Instrument ID: iCAP Q

Analysis index: 2

Analysis name: blk

Analysis started at: 8/25/2021 4:48:07 PM

User name: WINDOWS-UPCI4ER\Administrator

Category	Concentration average	Concentration RSD
9Be	0.000 ppb	
11B	0.000 ppb	
24Mg	0.000 ppb	
27Al	0.000 ppb	
40Ca	0.000 ppb	
51V	0.000 ppb	
52Cr	0.000 ppb	
55Mn	0.000 ppb	
56Fe	0.000 ppb	
58Ni	0.000 ppb	
59Co	0.000 ppb	
63Cu	0.000 ppb	
64Zn	0.000 ppb	
69Ga	0.000 ppb	
75As	0.000 ppb	
80Se	0.000 ppb	
85Rb	0.000 ppb	
88Sr	0.000 ppb	
107Ag	0.000 ppb	
114Cd	0.000 ppb	
133Cs	0.000 ppb	
138Ba	0.000 ppb	
139La	0.000 ppb	
140Ce	0.000 ppb	
141Pr	0.000 ppb	
142Nd	0.000 ppb	
152Sm	0.000 ppb	
153Eu	0.000 ppb	
158Gd	0.000 ppb	
164Dy	0.000 ppb	
165Ho	0.000 ppb	
166Er	0.000 ppb	
169Tm	0.000 ppb	
174Yb	0.000 ppb	
175Lu	0.000 ppb	
205Tl	0.000 ppb	
208Pb	0.000 ppb	
232Th	0.000 ppb	
238U	0.000 ppb	

Category	Concentration average	Intensity average	Intensity RSD
9Be	0.000 ppb	13 cps	
11B	0.000 ppb	56,163 cps	
24Mg	0.000 ppb	162,316 cps	
27Al	0.000 ppb	170,154 cps	
40Ca	0.000 ppb	6,535,398,244 cps	
51V	0.000 ppb	17,309 cps	
52Cr	0.000 ppb	59,786 cps	
55Mn	0.000 ppb	91,145 cps	
56Fe	0.000 ppb	8,137,983 cps	

Category	Concentration average	Intensity average	Intensity RSD
58Ni	0.000 ppb	26,912 cps	
59Co	0.000 ppb	4,961 cps	
63Cu	0.000 ppb	10,331 cps	
64Zn	0.000 ppb	36,727 cps	
69Ga	0.000 ppb	21,248 cps	
75As	0.000 ppb	1,610 cps	
80Se	0.000 ppb	10,206,899 cps	
85Rb	0.000 ppb	5,398 cps	
88Sr	0.000 ppb	31,236 cps	
107Ag	0.000 ppb	2,657 cps	
114Cd	0.000 ppb	1,293 cps	
133Cs	0.000 ppb	367 cps	
138Ba	0.000 ppb	170,718 cps	
139La	0.000 ppb	310 cps	
140Ce	0.000 ppb	740 cps	
141Pr	0.000 ppb	147 cps	
142Nd	0.000 ppb	203 cps	
152Sm	0.000 ppb	50 cps	
153Eu	0.000 ppb	67 cps	
158Gd	0.000 ppb	17 cps	
164Dy	0.000 ppb	120 cps	
165Ho	0.000 ppb	33 cps	
166Er	0.000 ppb	2,610 cps	
169Tm	0.000 ppb	67 cps	
174Yb	0.000 ppb	13 cps	
175Lu	0.000 ppb	23 cps	
205Tl	0.000 ppb	10 cps	
208Pb	0.000 ppb	7,859 cps	
232Th	0.000 ppb	1,610 cps	
238U	0.000 ppb	233 cps	

Sample Summary

Instrument ID: iCAP Q

Analysis index: 3

Analysis name: std1

Analysis started at: 8/25/2021 4:50:27 PM

User name: WINDOWS-UPCI4ER\Administrator

Category	Concentration average	Concentration RSD
9Be	100.000 ppb	
11B	100.000 ppb	
24Mg	100.000 ppb	
27Al	100.000 ppb	
40Ca	100.000 ppb	
51V	100.000 ppb	
52Cr	100.000 ppb	
55Mn	100.000 ppb	
56Fe	100.000 ppb	
58Ni	100.000 ppb	
59Co	100.000 ppb	
63Cu	100.000 ppb	
64Zn	100.000 ppb	
69Ga	100.000 ppb	
75As	100.000 ppb	
80Se	100.000 ppb	
85Rb	100.000 ppb	
88Sr	100.000 ppb	
107Ag	100.000 ppb	
114Cd	100.000 ppb	
133Cs	100.000 ppb	
138Ba	100.000 ppb	
139La	100.000 ppb	
140Ce	100.000 ppb	
141Pr	100.000 ppb	
142Nd	100.000 ppb	
152Sm	100.000 ppb	
153Eu	100.000 ppb	
158Gd	100.000 ppb	
164Dy	100.000 ppb	
165Ho	100.000 ppb	
166Er	100.000 ppb	
169Tm	100.000 ppb	
174Yb	100.000 ppb	
175Lu	100.000 ppb	
205Tl	100.000 ppb	
208Pb	100.000 ppb	
232Th	100.000 ppb	
238U	100.000 ppb	

Category	Concentration average	Intensity average	Intensity RSD
9Be	100.000 ppb	1,918,598 cps	
11B	100.000 ppb	2,797,009 cps	
24Mg	100.000 ppb	7,504,692 cps	
27Al	100.000 ppb	9,728,902 cps	
40Ca	100.000 ppb	6,367,332,708 cps	
51V	100.000 ppb	10,226,424 cps	
52Cr	100.000 ppb	9,281,074 cps	
55Mn	100.000 ppb	16,490,990 cps	
56Fe	100.000 ppb	20,901,908 cps	

Category	Concentration average	Intensity average	Intensity RSD
58Ni	100.000 ppb	5,321,998 cps	
59Co	100.000 ppb	10,766,260 cps	
63Cu	100.000 ppb	5,108,903 cps	
64Zn	100.000 ppb	2,876,643 cps	
69Ga	100.000 ppb	11,458,489 cps	
75As	100.000 ppb	1,380,139 cps	
80Se	100.000 ppb	10,714,109 cps	
85Rb	100.000 ppb	13,874,790 cps	
88Sr	100.000 ppb	19,482,869 cps	
107Ag	100.000 ppb	9,179,082 cps	
114Cd	100.000 ppb	5,092,981 cps	
133Cs	100.000 ppb	22,972,711 cps	
138Ba	100.000 ppb	20,102,264 cps	
139La	100.000 ppb	25,175,434 cps	
140Ce	100.000 ppb	25,715,982 cps	
141Pr	100.000 ppb	34,524,403 cps	
142Nd	100.000 ppb	12,997,014 cps	
152Sm	100.000 ppb	10,333,720 cps	
153Eu	100.000 ppb	19,660,288 cps	
158Gd	100.000 ppb	8,830,162 cps	
164Dy	100.000 ppb	11,793,922 cps	
165Ho	100.000 ppb	39,676,754 cps	
166Er	100.000 ppb	13,048,449 cps	
169Tm	100.000 ppb	39,919,976 cps	
174Yb	100.000 ppb	13,890,371 cps	
175Lu	100.000 ppb	40,325,261 cps	
205Tl	100.000 ppb	21,331,030 cps	
208Pb	100.000 ppb	15,816,179 cps	
232Th	100.000 ppb	30,990,567 cps	
238U	100.000 ppb	33,354,499 cps	

Sample Summary

Instrument ID: iCAP Q

Analysis index: 4

Analysis name: 179212jian

Analysis started at: 8/25/2021 4:52:37 PM

User name: WINDOWS-UPCI4ER\Administrator

Category	Concentration average	Concentration RSD
9Be	0.076 ppb	
11B	5.494 ppb	
24Mg	1,019.759 ppb	
27Al	1,339.706 ppb	
40Ca	632.184 ppb	
51V	2.998 ppb	
52Cr	3.573 ppb	
55Mn	33.396 ppb	
56Fe	1,596.117 ppb	
58Ni	15.286 ppb	
59Co	0.660 ppb	
63Cu	15.936 ppb	
64Zn	187.853 ppb	
69Ga	0.839 ppb	
75As	1.328 ppb	
80Se	-151.275 ppb	
85Rb	3.411 ppb	
88Sr	16.312 ppb	
107Ag	0.175 ppb	
114Cd	0.055 ppb	
133Cs	0.338 ppb	
138Ba	11.894 ppb	
139La	1.437 ppb	
140Ce	2.703 ppb	
141Pr	0.306 ppb	
142Nd	1.573 ppb	
152Sm	0.230 ppb	
153Eu	0.047 ppb	
158Gd	0.247 ppb	
164Dy	0.153 ppb	
165Ho	0.028 ppb	
166Er	0.106 ppb	
169Tm	0.010 ppb	
174Yb	0.066 ppb	
175Lu	0.010 ppb	
205Tl	0.025 ppb	
208Pb	2.017 ppb	
232Th	0.611 ppb	
238U	0.113 ppb	

Category	Concentration average	Intensity average	Intensity RSD
9Be	0.076 ppb	1,470 cps	
11B	5.494 ppb	206,735 cps	
24Mg	1,019.759 ppb	75,036,833 cps	
27Al	1,339.706 ppb	128,229,281 cps	
40Ca	632.184 ppb	5,472,914,857 cps	
51V	2.998 ppb	323,372 cps	
52Cr	3.573 ppb	389,266 cps	
55Mn	33.396 ppb	5,567,956 cps	
56Fe	1,596.117 ppb	211,865,153 cps	

Category	Concentration average	Intensity average	Intensity RSD
58Ni	15.286 ppb	836,293 cps	
59Co	0.660 ppb	75,944 cps	
63Cu	15.936 ppb	822,845 cps	
64Zn	187.853 ppb	5,371,584 cps	
69Ga	0.839 ppb	117,258 cps	
75As	1.328 ppb	19,913 cps	
80Se	-151.275 ppb	9,439,619 cps	
85Rb	3.411 ppb	478,502 cps	
88Sr	16.312 ppb	3,204,110 cps	
107Ag	0.175 ppb	18,687 cps	
114Cd	0.055 ppb	4,111 cps	
133Cs	0.338 ppb	77,899 cps	
138Ba	11.894 ppb	2,541,366 cps	
139La	1.437 ppb	362,006 cps	
140Ce	2.703 ppb	695,797 cps	
141Pr	0.306 ppb	105,887 cps	
142Nd	1.573 ppb	204,618 cps	
152Sm	0.230 ppb	23,779 cps	
153Eu	0.047 ppb	9,367 cps	
158Gd	0.247 ppb	21,869 cps	
164Dy	0.153 ppb	18,223 cps	
165Ho	0.028 ppb	11,102 cps	
166Er	0.106 ppb	16,424 cps	
169Tm	0.010 ppb	4,117 cps	
174Yb	0.066 ppb	9,127 cps	
175Lu	0.010 ppb	4,004 cps	
205Tl	0.025 ppb	5,388 cps	
208Pb	2.017 ppb	326,665 cps	
232Th	0.611 ppb	191,100 cps	
238U	0.113 ppb	38,059 cps	

Sample Summary

Instrument ID: iCAP Q

Analysis index: 5

Analysis name: 04675jian

Analysis started at: 8/25/2021 4:54:35 PM

User name: WINDOWS-UPCI4ER\Administrator

Category	Concentration average	Concentration RSD
9Be	0.052 ppb	
11B	3.148 ppb	
24Mg	1,000.751 ppb	
27Al	1,486.776 ppb	
40Ca	530.464 ppb	
51V	2.927 ppb	
52Cr	3.546 ppb	
55Mn	33.901 ppb	
56Fe	1,617.834 ppb	
58Ni	14.983 ppb	
59Co	0.650 ppb	
63Cu	10.532 ppb	
64Zn	169.477 ppb	
69Ga	0.831 ppb	
75As	0.774 ppb	
80Se	-192.250 ppb	
85Rb	3.391 ppb	
88Sr	17.998 ppb	
107Ag	0.038 ppb	
114Cd	0.035 ppb	
133Cs	0.300 ppb	
138Ba	11.633 ppb	
139La	1.407 ppb	
140Ce	2.630 ppb	
141Pr	0.304 ppb	
142Nd	1.488 ppb	
152Sm	0.237 ppb	
153Eu	0.044 ppb	
158Gd	0.232 ppb	
164Dy	0.147 ppb	
165Ho	0.028 ppb	
166Er	0.074 ppb	
169Tm	0.010 ppb	
174Yb	0.063 ppb	
175Lu	0.009 ppb	
205Tl	0.022 ppb	
208Pb	1.591 ppb	
232Th	0.506 ppb	
238U	0.116 ppb	

Category	Concentration average	Intensity average	Intensity RSD
9Be	0.052 ppb	1,013 cps	
11B	3.148 ppb	142,437 cps	
24Mg	1,000.751 ppb	73,641,204 cps	
27Al	1,486.776 ppb	142,287,297 cps	
40Ca	530.464 ppb	5,643,870,552 cps	
51V	2.927 ppb	316,157 cps	
52Cr	3.546 ppb	386,783 cps	
55Mn	33.901 ppb	5,650,810 cps	
56Fe	1,617.834 ppb	214,637,098 cps	

Category	Concentration average	Intensity average	Intensity RSD
58Ni	14.983 ppb	820,267 cps	
59Co	0.650 ppb	74,928 cps	
63Cu	10.532 ppb	547,293 cps	
64Zn	169.477 ppb	4,849,724 cps	
69Ga	0.831 ppb	116,286 cps	
75As	0.774 ppb	12,283 cps	
80Se	-192.250 ppb	9,231,789 cps	
85Rb	3.391 ppb	475,758 cps	
88Sr	17.998 ppb	3,532,116 cps	
107Ag	0.038 ppb	6,105 cps	
114Cd	0.035 ppb	3,064 cps	
133Cs	0.300 ppb	69,239 cps	
138Ba	11.633 ppb	2,489,270 cps	
139La	1.407 ppb	354,644 cps	
140Ce	2.630 ppb	677,160 cps	
141Pr	0.304 ppb	104,960 cps	
142Nd	1.488 ppb	193,535 cps	
152Sm	0.237 ppb	24,591 cps	
153Eu	0.044 ppb	8,806 cps	
158Gd	0.232 ppb	20,517 cps	
164Dy	0.147 ppb	17,499 cps	
165Ho	0.028 ppb	11,105 cps	
166Er	0.074 ppb	12,326 cps	
169Tm	0.010 ppb	3,957 cps	
174Yb	0.063 ppb	8,833 cps	
175Lu	0.009 ppb	3,651 cps	
205Tl	0.022 ppb	4,678 cps	
208Pb	1.591 ppb	259,332 cps	
232Th	0.506 ppb	158,568 cps	
238U	0.116 ppb	38,762 cps	

Sample Summary

Instrument ID: iCAP Q

Analysis index: 6

Analysis name: 045713jian

Analysis started at: 8/25/2021 4:56:25 PM

User name: WINDOWS-UPCI4ER\Administrator

Category	Concentration average	Concentration RSD
9Be	0.092 ppb	
11B	11.009 ppb	
24Mg	1,870.789 ppb	
27Al	2,353.734 ppb	
40Ca	60.968 ppb	
51V	5.196 ppb	
52Cr	6.723 ppb	
55Mn	61.454 ppb	
56Fe	2,906.912 ppb	
58Ni	27.798 ppb	
59Co	1.205 ppb	
63Cu	24.681 ppb	
64Zn	180.969 ppb	
69Ga	1.515 ppb	
75As	1.350 ppb	
80Se	-167.064 ppb	
85Rb	5.228 ppb	
88Sr	27.623 ppb	
107Ag	0.660 ppb	
114Cd	0.102 ppb	
133Cs	0.482 ppb	
138Ba	21.096 ppb	
139La	2.488 ppb	
140Ce	4.507 ppb	
141Pr	0.531 ppb	
142Nd	2.553 ppb	
152Sm	0.390 ppb	
153Eu	0.079 ppb	
158Gd	0.388 ppb	
164Dy	0.267 ppb	
165Ho	0.047 ppb	
166Er	0.203 ppb	
169Tm	0.017 ppb	
174Yb	0.099 ppb	
175Lu	0.015 ppb	
205Tl	0.031 ppb	
208Pb	2.291 ppb	
232Th	0.966 ppb	
238U	0.162 ppb	

Category	Concentration average	Intensity average	Intensity RSD
9Be	0.092 ppb	1,777 cps	
11B	11.009 ppb	357,915 cps	
24Mg	1,870.789 ppb	137,522,660 cps	
27Al	2,353.734 ppb	225,157,628 cps	
40Ca	60.968 ppb	6,432,931,531 cps	
51V	5.196 ppb	547,732 cps	
52Cr	6.723 ppb	679,768 cps	
55Mn	61.454 ppb	10,169,429 cps	
56Fe	2,906.912 ppb	379,174,080 cps	

Category	Concentration average	Intensity average	Intensity RSD
58Ni	27.798 ppb	1,498,858 cps	
59Co	1.205 ppb	134,596 cps	
63Cu	24.681 ppb	1,268,701 cps	
64Zn	180.969 ppb	5,176,087 cps	
69Ga	1.515 ppb	194,570 cps	
75As	1.350 ppb	20,220 cps	
80Se	-167.064 ppb	9,359,535 cps	
85Rb	5.228 ppb	730,465 cps	
88Sr	27.623 ppb	5,404,301 cps	
107Ag	0.660 ppb	63,177 cps	
114Cd	0.102 ppb	6,488 cps	
133Cs	0.482 ppb	111,130 cps	
138Ba	21.096 ppb	4,375,411 cps	
139La	2.488 ppb	626,664 cps	
140Ce	4.507 ppb	1,159,724 cps	
141Pr	0.531 ppb	183,320 cps	
142Nd	2.553 ppb	332,071 cps	
152Sm	0.390 ppb	40,382 cps	
153Eu	0.079 ppb	15,633 cps	
158Gd	0.388 ppb	34,297 cps	
164Dy	0.267 ppb	31,640 cps	
165Ho	0.047 ppb	18,711 cps	
166Er	0.203 ppb	29,117 cps	
169Tm	0.017 ppb	6,839 cps	
174Yb	0.099 ppb	13,794 cps	
175Lu	0.015 ppb	5,971 cps	
205Tl	0.031 ppb	6,532 cps	
208Pb	2.291 ppb	370,077 cps	
232Th	0.966 ppb	300,847 cps	
238U	0.162 ppb	54,195 cps	

Sample Summary

Instrument ID: iCAP Q

Analysis index: 7

Analysis name: 046754jian

Analysis started at: 8/25/2021 4:58:22 PM

User name: WINDOWS-UPCI4ER\Administrator

Category	Concentration average	Concentration RSD
9Be	0.039 ppb	
11B	3.707 ppb	
24Mg	782.383 ppb	
27Al	1,115.991 ppb	
40Ca	-82.466 ppb	
51V	2.423 ppb	
52Cr	3.343 ppb	
55Mn	24.636 ppb	
56Fe	1,130.123 ppb	
58Ni	12.542 ppb	
59Co	0.474 ppb	
63Cu	17.005 ppb	
64Zn	179.833 ppb	
69Ga	0.734 ppb	
75As	0.773 ppb	
80Se	-71.613 ppb	
85Rb	2.537 ppb	
88Sr	14.624 ppb	
107Ag	0.053 ppb	
114Cd	0.091 ppb	
133Cs	0.192 ppb	
138Ba	8.961 ppb	
139La	0.941 ppb	
140Ce	1.712 ppb	
141Pr	0.221 ppb	
142Nd	1.167 ppb	
152Sm	0.159 ppb	
153Eu	0.032 ppb	
158Gd	0.161 ppb	
164Dy	0.099 ppb	
165Ho	0.018 ppb	
166Er	0.046 ppb	
169Tm	0.006 ppb	
174Yb	0.043 ppb	
175Lu	0.006 ppb	
205Tl	0.016 ppb	
208Pb	1.712 ppb	
232Th	0.280 ppb	
238U	0.081 ppb	

Category	Concentration average	Intensity average	Intensity RSD
9Be	0.039 ppb	763 cps	
11B	3.707 ppb	157,762 cps	
24Mg	782.383 ppb	57,607,788 cps	
27Al	1,115.991 ppb	106,844,894 cps	
40Ca	-82.466 ppb	6,673,995,734 cps	
51V	2.423 ppb	264,701 cps	
52Cr	3.343 ppb	368,029 cps	
55Mn	24.636 ppb	4,131,368 cps	
56Fe	1,130.123 ppb	152,386,019 cps	

Category	Concentration average	Intensity average	Intensity RSD
58Ni	12.542 ppb	691,015 cps	
59Co	0.474 ppb	55,992 cps	
63Cu	17.005 ppb	877,335 cps	
64Zn	179.833 ppb	5,143,844 cps	
69Ga	0.734 ppb	105,249 cps	
75As	0.773 ppb	12,273 cps	
80Se	-71.613 ppb	9,843,669 cps	
85Rb	2.537 ppb	357,265 cps	
88Sr	14.624 ppb	2,875,923 cps	
107Ag	0.053 ppb	7,489 cps	
114Cd	0.091 ppb	5,918 cps	
133Cs	0.192 ppb	44,446 cps	
138Ba	8.961 ppb	1,956,753 cps	
139La	0.941 ppb	237,295 cps	
140Ce	1.712 ppb	440,914 cps	
141Pr	0.221 ppb	76,310 cps	
142Nd	1.167 ppb	151,892 cps	
152Sm	0.159 ppb	16,488 cps	
153Eu	0.032 ppb	6,445 cps	
158Gd	0.161 ppb	14,222 cps	
164Dy	0.099 ppb	11,822 cps	
165Ho	0.018 ppb	7,199 cps	
166Er	0.046 ppb	8,560 cps	
169Tm	0.006 ppb	2,650 cps	
174Yb	0.043 ppb	5,988 cps	
175Lu	0.006 ppb	2,364 cps	
205Tl	0.016 ppb	3,450 cps	
208Pb	1.712 ppb	278,503 cps	
232Th	0.280 ppb	88,493 cps	
238U	0.081 ppb	27,177 cps	

Sample Summary

Instrument ID: iCAP Q

Analysis index: 8

Analysis name: 046747jian

Analysis started at: 8/25/2021 5:00:22 PM

User name: WINDOWS-UPCI4ER\Administrator

Category	Concentration average	Concentration RSD
9Be	0.068 ppb	
11B	4.429 ppb	
24Mg	1,569.122 ppb	
27Al	2,129.887 ppb	
40Ca	-389.175 ppb	
51V	4.525 ppb	
52Cr	5.213 ppb	
55Mn	53.986 ppb	
56Fe	2,299.857 ppb	
58Ni	21.892 ppb	
59Co	1.076 ppb	
63Cu	15.228 ppb	
64Zn	168.092 ppb	
69Ga	1.249 ppb	
75As	1.145 ppb	
80Se	-70.311 ppb	
85Rb	4.178 ppb	
88Sr	24.936 ppb	
107Ag	0.025 ppb	
114Cd	0.086 ppb	
133Cs	0.397 ppb	
138Ba	14.510 ppb	
139La	1.629 ppb	
140Ce	3.166 ppb	
141Pr	0.380 ppb	
142Nd	2.210 ppb	
152Sm	0.290 ppb	
153Eu	0.059 ppb	
158Gd	0.289 ppb	
164Dy	0.178 ppb	
165Ho	0.033 ppb	
166Er	0.073 ppb	
169Tm	0.011 ppb	
174Yb	0.065 ppb	
175Lu	0.011 ppb	
205Tl	0.025 ppb	
208Pb	2.064 ppb	
232Th	0.528 ppb	
238U	0.120 ppb	

Category	Concentration average	Intensity average	Intensity RSD
9Be	0.068 ppb	1,313 cps	
11B	4.429 ppb	177,543 cps	
24Mg	1,569.122 ppb	115,373,119 cps	
27Al	2,129.887 ppb	203,760,658 cps	
40Ca	-389.175 ppb	7,189,467,793 cps	
51V	4.525 ppb	479,276 cps	
52Cr	5.213 ppb	540,506 cps	
55Mn	53.986 ppb	8,944,818 cps	
56Fe	2,299.857 ppb	301,690,021 cps	

Category	Concentration average	Intensity average	Intensity RSD
58Ni	21.892 ppb	1,186,127 cps	
59Co	1.076 ppb	120,741 cps	
63Cu	15.228 ppb	786,753 cps	
64Zn	168.092 ppb	4,810,392 cps	
69Ga	1.249 ppb	164,149 cps	
75As	1.145 ppb	17,389 cps	
80Se	-70.311 ppb	9,850,276 cps	
85Rb	4.178 ppb	584,890 cps	
88Sr	24.936 ppb	4,881,750 cps	
107Ag	0.025 ppb	4,924 cps	
114Cd	0.086 ppb	5,661 cps	
133Cs	0.397 ppb	91,639 cps	
138Ba	14.510 ppb	3,062,832 cps	
139La	1.629 ppb	410,537 cps	
140Ce	3.166 ppb	814,838 cps	
141Pr	0.380 ppb	131,336 cps	
142Nd	2.210 ppb	287,474 cps	
152Sm	0.290 ppb	30,036 cps	
153Eu	0.059 ppb	11,629 cps	
158Gd	0.289 ppb	25,520 cps	
164Dy	0.178 ppb	21,138 cps	
165Ho	0.033 ppb	13,080 cps	
166Er	0.073 ppb	12,196 cps	
169Tm	0.011 ppb	4,561 cps	
174Yb	0.065 ppb	9,023 cps	
175Lu	0.011 ppb	4,354 cps	
205Tl	0.025 ppb	5,411 cps	
208Pb	2.064 ppb	334,181 cps	
232Th	0.528 ppb	165,240 cps	
238U	0.120 ppb	40,152 cps	

Sample Summary

Instrument ID: iCAP Q

Analysis index: 9

Analysis name: 051946jian

Analysis started at: 8/25/2021 5:02:10 PM

User name: WINDOWS-UPCI4ER\Administrator

Category	Concentration average	Concentration RSD
9Be	0.072 ppb	
11B	6.494 ppb	
24Mg	1,705.440 ppb	
27Al	2,383.123 ppb	
40Ca	-421.311 ppb	
51V	4.761 ppb	
52Cr	5.137 ppb	
55Mn	52.431 ppb	
56Fe	2,525.514 ppb	
58Ni	24.003 ppb	
59Co	1.080 ppb	
63Cu	11.373 ppb	
64Zn	162.393 ppb	
69Ga	1.375 ppb	
75As	1.264 ppb	
80Se	-35.616 ppb	
85Rb	5.348 ppb	
88Sr	21.927 ppb	
107Ag	0.028 ppb	
114Cd	0.056 ppb	
133Cs	0.404 ppb	
138Ba	14.545 ppb	
139La	2.060 ppb	
140Ce	4.066 ppb	
141Pr	0.462 ppb	
142Nd	2.239 ppb	
152Sm	0.347 ppb	
153Eu	0.074 ppb	
158Gd	0.339 ppb	
164Dy	0.200 ppb	
165Ho	0.039 ppb	
166Er	0.095 ppb	
169Tm	0.014 ppb	
174Yb	0.086 ppb	
175Lu	0.013 ppb	
205Tl	0.030 ppb	
208Pb	1.808 ppb	
232Th	0.625 ppb	
238U	0.119 ppb	

Category	Concentration average	Intensity average	Intensity RSD
9Be	0.072 ppb	1,390 cps	
11B	6.494 ppb	234,142 cps	
24Mg	1,705.440 ppb	125,382,144 cps	
27Al	2,383.123 ppb	227,966,824 cps	
40Ca	-421.311 ppb	7,243,476,565 cps	
51V	4.761 ppb	503,387 cps	
52Cr	5.137 ppb	533,519 cps	
55Mn	52.431 ppb	8,689,741 cps	
56Fe	2,525.514 ppb	330,492,686 cps	

Category	Concentration average	Intensity average	Intensity RSD
58Ni	24.003 ppb	1,297,890 cps	
59Co	1.080 ppb	121,152 cps	
63Cu	11.373 ppb	590,196 cps	
64Zn	162.393 ppb	4,648,546 cps	
69Ga	1.375 ppb	178,480 cps	
75As	1.264 ppb	19,028 cps	
80Se	-35.616 ppb	10,026,251 cps	
85Rb	5.348 ppb	747,070 cps	
88Sr	21.927 ppb	4,296,467 cps	
107Ag	0.028 ppb	5,194 cps	
114Cd	0.056 ppb	4,147 cps	
133Cs	0.404 ppb	93,154 cps	
138Ba	14.545 ppb	3,069,663 cps	
139La	2.060 ppb	518,992 cps	
140Ce	4.066 ppb	1,046,368 cps	
141Pr	0.462 ppb	159,631 cps	
142Nd	2.239 ppb	291,152 cps	
152Sm	0.347 ppb	35,908 cps	
153Eu	0.074 ppb	14,518 cps	
158Gd	0.339 ppb	29,919 cps	
164Dy	0.200 ppb	23,736 cps	
165Ho	0.039 ppb	15,403 cps	
166Er	0.095 ppb	14,976 cps	
169Tm	0.014 ppb	5,678 cps	
174Yb	0.086 ppb	11,919 cps	
175Lu	0.013 ppb	5,084 cps	
205Tl	0.030 ppb	6,438 cps	
208Pb	1.808 ppb	293,613 cps	
232Th	0.625 ppb	195,434 cps	
238U	0.119 ppb	39,790 cps	

Sample Summary

Instrument ID: iCAP Q

Analysis index: 10

Analysis name: 046317jian

Analysis started at: 8/25/2021 5:04:06 PM

User name: WINDOWS-UPCI4ER\Administrator

Category	Concentration average	Concentration RSD
9Be	0.066 ppb	
11B	4.686 ppb	
24Mg	1,706.521 ppb	
27Al	2,159.375 ppb	
40Ca	-539.250 ppb	
51V	4.833 ppb	
52Cr	5.547 ppb	
55Mn	50.895 ppb	
56Fe	2,419.744 ppb	
58Ni	23.829 ppb	
59Co	1.059 ppb	
63Cu	15.918 ppb	
64Zn	192.353 ppb	
69Ga	1.414 ppb	
75As	1.380 ppb	
80Se	11.407 ppb	
85Rb	4.858 ppb	
88Sr	21.765 ppb	
107Ag	0.099 ppb	
114Cd	0.091 ppb	
133Cs	0.372 ppb	
138Ba	15.041 ppb	
139La	1.835 ppb	
140Ce	3.376 ppb	
141Pr	0.398 ppb	
142Nd	1.975 ppb	
152Sm	0.302 ppb	
153Eu	0.060 ppb	
158Gd	0.286 ppb	
164Dy	0.196 ppb	
165Ho	0.035 ppb	
166Er	0.088 ppb	
169Tm	0.014 ppb	
174Yb	0.070 ppb	
175Lu	0.010 ppb	
205Tl	0.026 ppb	
208Pb	1.861 ppb	
232Th	0.556 ppb	
238U	0.107 ppb	

Category	Concentration average	Intensity average	Intensity RSD
9Be	0.066 ppb	1,280 cps	
11B	4.686 ppb	184,586 cps	
24Mg	1,706.521 ppb	125,461,527 cps	
27Al	2,159.375 ppb	206,579,380 cps	
40Ca	-539.250 ppb	7,441,692,142 cps	
51V	4.833 ppb	510,728 cps	
52Cr	5.547 ppb	571,311 cps	
55Mn	50.895 ppb	8,437,787 cps	
56Fe	2,419.744 ppb	316,992,320 cps	

Category	Concentration average	Intensity average	Intensity RSD
58Ni	23.829 ppb	1,288,697 cps	
59Co	1.059 ppb	118,969 cps	
63Cu	15.918 ppb	821,901 cps	
64Zn	192.353 ppb	5,499,390 cps	
69Ga	1.414 ppb	182,988 cps	
75As	1.380 ppb	20,627 cps	
80Se	11.407 ppb	10,264,755 cps	
85Rb	4.858 ppb	679,152 cps	
88Sr	21.765 ppb	4,264,918 cps	
107Ag	0.099 ppb	11,736 cps	
114Cd	0.091 ppb	5,935 cps	
133Cs	0.372 ppb	85,711 cps	
138Ba	15.041 ppb	3,168,704 cps	
139La	1.835 ppb	462,302 cps	
140Ce	3.376 ppb	868,804 cps	
141Pr	0.398 ppb	137,582 cps	
142Nd	1.975 ppb	256,869 cps	
152Sm	0.302 ppb	31,283 cps	
153Eu	0.060 ppb	11,892 cps	
158Gd	0.286 ppb	25,272 cps	
164Dy	0.196 ppb	23,238 cps	
165Ho	0.035 ppb	13,758 cps	
166Er	0.088 ppb	14,131 cps	
169Tm	0.014 ppb	5,505 cps	
174Yb	0.070 ppb	9,720 cps	
175Lu	0.010 ppb	4,004 cps	
205Tl	0.026 ppb	5,451 cps	
208Pb	1.861 ppb	301,997 cps	
232Th	0.556 ppb	173,929 cps	
238U	0.107 ppb	35,925 cps	

Sample Summary

Instrument ID: iCAP Q

Analysis index: 11

Analysis name: 033892jian

Analysis started at: 8/25/2021 5:06:01 PM

User name: WINDOWS-UPCI4ER\Administrator

Category	Concentration average	Concentration RSD
9Be	0.049 ppb	
11B	3.803 ppb	
24Mg	981.352 ppb	
27Al	1,332.301 ppb	
40Ca	-559.657 ppb	
51V	3.004 ppb	
52Cr	5.335 ppb	
55Mn	30.860 ppb	
56Fe	1,418.375 ppb	
58Ni	13.906 ppb	
59Co	0.622 ppb	
63Cu	12.269 ppb	
64Zn	190.156 ppb	
69Ga	0.888 ppb	
75As	1.186 ppb	
80Se	45.618 ppb	
85Rb	3.708 ppb	
88Sr	13.925 ppb	
107Ag	0.081 ppb	
114Cd	0.057 ppb	
133Cs	0.264 ppb	
138Ba	9.107 ppb	
139La	0.924 ppb	
140Ce	1.853 ppb	
141Pr	0.220 ppb	
142Nd	1.083 ppb	
152Sm	0.160 ppb	
153Eu	0.038 ppb	
158Gd	0.162 ppb	
164Dy	0.103 ppb	
165Ho	0.019 ppb	
166Er	0.056 ppb	
169Tm	0.007 ppb	
174Yb	0.055 ppb	
175Lu	0.006 ppb	
205Tl	0.019 ppb	
208Pb	1.466 ppb	
232Th	0.281 ppb	
238U	0.071 ppb	

Category	Concentration average	Intensity average	Intensity RSD
9Be	0.049 ppb	960 cps	
11B	3.803 ppb	160,411 cps	
24Mg	981.352 ppb	72,216,880 cps	
27Al	1,332.301 ppb	127,521,465 cps	
40Ca	-559.657 ppb	7,475,988,112 cps	
51V	3.004 ppb	323,945 cps	
52Cr	5.335 ppb	551,727 cps	
55Mn	30.860 ppb	5,152,212 cps	
56Fe	1,418.375 ppb	189,178,340 cps	

Category	Concentration average	Intensity average	Intensity RSD
58Ni	13.906 ppb	763,259 cps	
59Co	0.622 ppb	71,863 cps	
63Cu	12.269 ppb	635,860 cps	
64Zn	190.156 ppb	5,436,992 cps	
69Ga	0.888 ppb	122,819 cps	
75As	1.186 ppb	17,966 cps	
80Se	45.618 ppb	10,438,277 cps	
85Rb	3.708 ppb	519,665 cps	
88Sr	13.925 ppb	2,739,788 cps	
107Ag	0.081 ppb	10,044 cps	
114Cd	0.057 ppb	4,177 cps	
133Cs	0.264 ppb	60,926 cps	
138Ba	9.107 ppb	1,985,841 cps	
139La	0.924 ppb	232,815 cps	
140Ce	1.853 ppb	477,307 cps	
141Pr	0.220 ppb	76,162 cps	
142Nd	1.083 ppb	140,952 cps	
152Sm	0.160 ppb	16,594 cps	
153Eu	0.038 ppb	7,576 cps	
158Gd	0.162 ppb	14,338 cps	
164Dy	0.103 ppb	12,219 cps	
165Ho	0.019 ppb	7,689 cps	
166Er	0.056 ppb	9,854 cps	
169Tm	0.007 ppb	2,874 cps	
174Yb	0.055 ppb	7,634 cps	
175Lu	0.006 ppb	2,520 cps	
205Tl	0.019 ppb	4,141 cps	
208Pb	1.466 ppb	239,556 cps	
232Th	0.281 ppb	88,727 cps	
238U	0.071 ppb	23,850 cps	

Sample Summary

Instrument ID: iCAP Q

Analysis index: 12

Analysis name: 046757jian

Analysis started at: 8/25/2021 5:07:48 PM

User name: WINDOWS-UPCI4ER\Administrator

Category	Concentration average	Concentration RSD
9Be	0.075 ppb	
11B	5.140 ppb	
24Mg	1,760.735 ppb	
27Al	2,272.315 ppb	
40Ca	-606.922 ppb	
51V	4.781 ppb	
52Cr	6.332 ppb	
55Mn	58.076 ppb	
56Fe	2,618.370 ppb	
58Ni	24.882 ppb	
59Co	1.121 ppb	
63Cu	14.957 ppb	
64Zn	179.107 ppb	
69Ga	1.484 ppb	
75As	1.585 ppb	
80Se	12.346 ppb	
85Rb	4.251 ppb	
88Sr	25.521 ppb	
107Ag	0.046 ppb	
114Cd	0.038 ppb	
133Cs	0.409 ppb	
138Ba	15.936 ppb	
139La	2.110 ppb	
140Ce	4.195 ppb	
141Pr	0.473 ppb	
142Nd	2.293 ppb	
152Sm	0.336 ppb	
153Eu	0.069 ppb	
158Gd	0.341 ppb	
164Dy	0.216 ppb	
165Ho	0.038 ppb	
166Er	0.104 ppb	
169Tm	0.014 ppb	
174Yb	0.079 ppb	
175Lu	0.011 ppb	
205Tl	0.022 ppb	
208Pb	2.063 ppb	
232Th	0.611 ppb	
238U	0.147 ppb	

Category	Concentration average	Intensity average	Intensity RSD
9Be	0.075 ppb	1,453 cps	
11B	5.140 ppb	197,031 cps	
24Mg	1,760.735 ppb	129,442,058 cps	
27Al	2,272.315 ppb	217,374,980 cps	
40Ca	-606.922 ppb	7,555,425,481 cps	
51V	4.781 ppb	505,358 cps	
52Cr	6.332 ppb	643,647 cps	
55Mn	58.076 ppb	9,615,595 cps	
56Fe	2,618.370 ppb	342,344,752 cps	

Category	Concentration average	Intensity average	Intensity RSD
58Ni	24.882 ppb	1,344,459 cps	
59Co	1.121 ppb	125,647 cps	
63Cu	14.957 ppb	772,947 cps	
64Zn	179.107 ppb	5,123,206 cps	
69Ga	1.484 ppb	190,958 cps	
75As	1.585 ppb	23,465 cps	
80Se	12.346 ppb	10,269,521 cps	
85Rb	4.251 ppb	594,932 cps	
88Sr	25.521 ppb	4,995,400 cps	
107Ag	0.046 ppb	6,912 cps	
114Cd	0.038 ppb	3,224 cps	
133Cs	0.409 ppb	94,269 cps	
138Ba	15.936 ppb	3,346,991 cps	
139La	2.110 ppb	531,580 cps	
140Ce	4.195 ppb	1,079,614 cps	
141Pr	0.473 ppb	163,528 cps	
142Nd	2.293 ppb	298,171 cps	
152Sm	0.336 ppb	34,802 cps	
153Eu	0.069 ppb	13,704 cps	
158Gd	0.341 ppb	30,144 cps	
164Dy	0.216 ppb	25,560 cps	
165Ho	0.038 ppb	15,009 cps	
166Er	0.104 ppb	16,161 cps	
169Tm	0.014 ppb	5,561 cps	
174Yb	0.079 ppb	10,998 cps	
175Lu	0.011 ppb	4,484 cps	
205Tl	0.022 ppb	4,701 cps	
208Pb	2.063 ppb	334,002 cps	
232Th	0.611 ppb	191,026 cps	
238U	0.147 ppb	49,194 cps	

Sample Summary

Instrument ID: iCAP Q

Analysis index: 13

Analysis name: 046314jian

Analysis started at: 8/25/2021 5:09:35 PM

User name: WINDOWS-UPCI4ER\Administrator

Category	Concentration average	Concentration RSD
9Be	0.086 ppb	
11B	7.044 ppb	
24Mg	2,065.201 ppb	
27Al	2,677.562 ppb	
40Ca	-566.992 ppb	
51V	5.648 ppb	
52Cr	7.317 ppb	
55Mn	63.897 ppb	
56Fe	2,957.939 ppb	
58Ni	28.738 ppb	
59Co	1.251 ppb	
63Cu	13.125 ppb	
64Zn	174.581 ppb	
69Ga	1.662 ppb	
75As	1.517 ppb	
80Se	14.347 ppb	
85Rb	5.480 ppb	
88Sr	26.406 ppb	
107Ag	0.064 ppb	
114Cd	0.162 ppb	
133Cs	0.475 ppb	
138Ba	17.162 ppb	
139La	2.135 ppb	
140Ce	4.007 ppb	
141Pr	0.488 ppb	
142Nd	2.436 ppb	
152Sm	0.353 ppb	
153Eu	0.075 ppb	
158Gd	0.366 ppb	
164Dy	0.220 ppb	
165Ho	0.041 ppb	
166Er	0.119 ppb	
169Tm	0.015 ppb	
174Yb	0.089 ppb	
175Lu	0.013 ppb	
205Tl	0.032 ppb	
208Pb	2.057 ppb	
232Th	0.639 ppb	
238U	0.140 ppb	

Category	Concentration average	Intensity average	Intensity RSD
9Be	0.086 ppb	1,657 cps	
11B	7.044 ppb	249,230 cps	
24Mg	2,065.201 ppb	151,797,143 cps	
27Al	2,677.562 ppb	256,111,510 cps	
40Ca	-566.992 ppb	7,488,316,011 cps	
51V	5.648 ppb	593,901 cps	
52Cr	7.317 ppb	734,490 cps	
55Mn	63.897 ppb	10,570,182 cps	
56Fe	2,957.939 ppb	385,687,069 cps	

Category	Concentration average	Intensity average	Intensity RSD
58Ni	28.738 ppb	1,548,611 cps	
59Co	1.251 ppb	139,574 cps	
63Cu	13.125 ppb	679,531 cps	
64Zn	174.581 ppb	4,994,672 cps	
69Ga	1.662 ppb	211,279 cps	
75As	1.517 ppb	22,517 cps	
80Se	14.347 ppb	10,279,667 cps	
85Rb	5.480 ppb	765,408 cps	
88Sr	26.406 ppb	5,167,661 cps	
107Ag	0.064 ppb	8,550 cps	
114Cd	0.162 ppb	9,534 cps	
133Cs	0.475 ppb	109,467 cps	
138Ba	17.162 ppb	3,591,377 cps	
139La	2.135 ppb	537,720 cps	
140Ce	4.007 ppb	1,031,247 cps	
141Pr	0.488 ppb	168,706 cps	
142Nd	2.436 ppb	316,771 cps	
152Sm	0.353 ppb	36,527 cps	
153Eu	0.075 ppb	14,836 cps	
158Gd	0.366 ppb	32,365 cps	
164Dy	0.220 ppb	26,057 cps	
165Ho	0.041 ppb	16,448 cps	
166Er	0.119 ppb	18,193 cps	
169Tm	0.015 ppb	5,948 cps	
174Yb	0.089 ppb	12,323 cps	
175Lu	0.013 ppb	5,274 cps	
205Tl	0.032 ppb	6,899 cps	
208Pb	2.057 ppb	333,081 cps	
232Th	0.639 ppb	199,707 cps	
238U	0.140 ppb	46,925 cps	

Sample Summary

Instrument ID: iCAP Q

Analysis index: 14

Analysis name: 179396jian

Analysis started at: 8/25/2021 5:11:24 PM

User name: WINDOWS-UPCI4ER\Administrator

Category	Concentration average	Concentration RSD
9Be	0.047 ppb	
11B	2.529 ppb	
24Mg	1,231.414 ppb	
27Al	1,674.689 ppb	
40Ca	-507.459 ppb	
51V	3.545 ppb	
52Cr	4.607 ppb	
55Mn	39.144 ppb	
56Fe	1,747.336 ppb	
58Ni	16.522 ppb	
59Co	0.763 ppb	
63Cu	16.089 ppb	
64Zn	197.033 ppb	
69Ga	1.074 ppb	
75As	1.038 ppb	
80Se	53.349 ppb	
85Rb	3.808 ppb	
88Sr	16.078 ppb	
107Ag	0.073 ppb	
114Cd	0.086 ppb	
133Cs	0.293 ppb	
138Ba	10.904 ppb	
139La	1.428 ppb	
140Ce	2.983 ppb	
141Pr	0.348 ppb	
142Nd	1.726 ppb	
152Sm	0.323 ppb	
153Eu	0.044 ppb	
158Gd	0.298 ppb	
164Dy	0.160 ppb	
165Ho	0.029 ppb	
166Er	0.063 ppb	
169Tm	0.009 ppb	
174Yb	0.053 ppb	
175Lu	0.009 ppb	
205Tl	0.020 ppb	
208Pb	1.647 ppb	
232Th	0.768 ppb	
238U	0.099 ppb	

Category	Concentration average	Intensity average	Intensity RSD
9Be	0.047 ppb	910 cps	
11B	2.529 ppb	125,473 cps	
24Mg	1,231.414 ppb	90,577,377 cps	
27Al	1,674.689 ppb	160,249,415 cps	
40Ca	-507.459 ppb	7,388,262,563 cps	
51V	3.545 ppb	379,199 cps	
52Cr	4.607 ppb	484,643 cps	
55Mn	39.144 ppb	6,510,765 cps	
56Fe	1,747.336 ppb	231,166,678 cps	

Category	Concentration average	Intensity average	Intensity RSD
58Ni	16.522 ppb	901,761 cps	
59Co	0.763 ppb	87,056 cps	
63Cu	16.089 ppb	830,650 cps	
64Zn	197.033 ppb	5,632,295 cps	
69Ga	1.074 ppb	144,030 cps	
75As	1.038 ppb	15,917 cps	
80Se	53.349 ppb	10,477,493 cps	
85Rb	3.808 ppb	533,571 cps	
88Sr	16.078 ppb	3,158,630 cps	
107Ag	0.073 ppb	9,333 cps	
114Cd	0.086 ppb	5,695 cps	
133Cs	0.293 ppb	67,714 cps	
138Ba	10.904 ppb	2,344,135 cps	
139La	1.428 ppb	359,750 cps	
140Ce	2.983 ppb	767,931 cps	
141Pr	0.348 ppb	120,321 cps	
142Nd	1.726 ppb	224,534 cps	
152Sm	0.323 ppb	33,455 cps	
153Eu	0.044 ppb	8,760 cps	
158Gd	0.298 ppb	26,298 cps	
164Dy	0.160 ppb	18,971 cps	
165Ho	0.029 ppb	11,632 cps	
166Er	0.063 ppb	10,815 cps	
169Tm	0.009 ppb	3,851 cps	
174Yb	0.053 ppb	7,336 cps	
175Lu	0.009 ppb	3,584 cps	
205Tl	0.020 ppb	4,351 cps	
208Pb	1.647 ppb	268,236 cps	
232Th	0.768 ppb	239,475 cps	
238U	0.099 ppb	33,291 cps	

Sample Summary

Instrument ID: iCAP Q

Analysis index: 15

Analysis name: 046288jian

Analysis started at: 8/25/2021 5:13:18 PM

User name: WINDOWS-UPCI4ER\Administrator

Category	Concentration average	Concentration RSD
9Be	0.072 ppb	
11B	4.213 ppb	
24Mg	1,689.362 ppb	
27Al	2,080.254 ppb	
40Ca	-638.365 ppb	
51V	4.497 ppb	
52Cr	7.470 ppb	
55Mn	50.749 ppb	
56Fe	2,263.455 ppb	
58Ni	25.972 ppb	
59Co	0.992 ppb	
63Cu	18.616 ppb	
64Zn	254.725 ppb	
69Ga	1.970 ppb	
75As	1.918 ppb	
80Se	65.975 ppb	
85Rb	4.552 ppb	
88Sr	88.676 ppb	
107Ag	0.072 ppb	
114Cd	0.070 ppb	
133Cs	0.351 ppb	
138Ba	27.182 ppb	
139La	1.395 ppb	
140Ce	2.802 ppb	
141Pr	0.320 ppb	
142Nd	1.539 ppb	
152Sm	0.242 ppb	
153Eu	0.053 ppb	
158Gd	0.250 ppb	
164Dy	0.152 ppb	
165Ho	0.028 ppb	
166Er	0.063 ppb	
169Tm	0.011 ppb	
174Yb	0.064 ppb	
175Lu	0.009 ppb	
205Tl	0.025 ppb	
208Pb	3.739 ppb	
232Th	0.425 ppb	
238U	0.331 ppb	

Category	Concentration average	Intensity average	Intensity RSD
9Be	0.072 ppb	1,387 cps	
11B	4.213 ppb	171,631 cps	
24Mg	1,689.362 ppb	124,201,624 cps	
27Al	2,080.254 ppb	199,016,364 cps	
40Ca	-638.365 ppb	7,608,270,216 cps	
51V	4.497 ppb	476,387 cps	
52Cr	7.470 ppb	748,612 cps	
55Mn	50.749 ppb	8,413,961 cps	
56Fe	2,263.455 ppb	297,043,726 cps	

Category	Concentration average	Intensity average	Intensity RSD
58Ni	25.972 ppb	1,402,162 cps	
59Co	0.992 ppb	111,697 cps	
63Cu	18.616 ppb	959,505 cps	
64Zn	254.725 ppb	7,270,711 cps	
69Ga	1.970 ppb	246,566 cps	
75As	1.918 ppb	28,045 cps	
80Se	65.975 ppb	10,541,531 cps	
85Rb	4.552 ppb	636,765 cps	
88Sr	88.676 ppb	17,280,251 cps	
107Ag	0.072 ppb	9,233 cps	
114Cd	0.070 ppb	4,844 cps	
133Cs	0.351 ppb	80,996 cps	
138Ba	27.182 ppb	5,588,584 cps	
139La	1.395 ppb	351,598 cps	
140Ce	2.802 ppb	721,312 cps	
141Pr	0.320 ppb	110,496 cps	
142Nd	1.539 ppb	200,188 cps	
152Sm	0.242 ppb	25,049 cps	
153Eu	0.053 ppb	10,521 cps	
158Gd	0.250 ppb	22,093 cps	
164Dy	0.152 ppb	18,093 cps	
165Ho	0.028 ppb	11,022 cps	
166Er	0.063 ppb	10,828 cps	
169Tm	0.011 ppb	4,504 cps	
174Yb	0.064 ppb	8,917 cps	
175Lu	0.009 ppb	3,480 cps	
205Tl	0.025 ppb	5,448 cps	
208Pb	3.739 ppb	598,966 cps	
232Th	0.425 ppb	133,382 cps	
238U	0.331 ppb	110,583 cps	

Sample Summary

Instrument ID: iCAP Q

Analysis index: 16

Analysis name: 179421jian

Analysis started at: 8/25/2021 5:15:04 PM

User name: WINDOWS-UPCI4ER\Administrator

Category	Concentration average	Concentration RSD
9Be	0.062 ppb	
11B	6.404 ppb	
24Mg	1,389.984 ppb	
27Al	1,930.896 ppb	
40Ca	-603.705 ppb	
51V	4.002 ppb	
52Cr	4.867 ppb	
55Mn	44.953 ppb	
56Fe	1,949.307 ppb	
58Ni	19.156 ppb	
59Co	2.183 ppb	
63Cu	24.264 ppb	
64Zn	198.380 ppb	
69Ga	1.239 ppb	
75As	1.265 ppb	
80Se	61.965 ppb	
85Rb	4.393 ppb	
88Sr	21.224 ppb	
107Ag	0.225 ppb	
114Cd	0.079 ppb	
133Cs	0.350 ppb	
138Ba	13.640 ppb	
139La	1.357 ppb	
140Ce	2.594 ppb	
141Pr	0.306 ppb	
142Nd	1.503 ppb	
152Sm	0.234 ppb	
153Eu	0.047 ppb	
158Gd	0.235 ppb	
164Dy	0.162 ppb	
165Ho	0.026 ppb	
166Er	0.080 ppb	
169Tm	0.011 ppb	
174Yb	0.059 ppb	
175Lu	0.009 ppb	
205Tl	0.024 ppb	
208Pb	2.825 ppb	
232Th	0.438 ppb	
238U	0.102 ppb	

Category	Concentration average	Intensity average	Intensity RSD
9Be	0.062 ppb	1,203 cps	
11B	6.404 ppb	231,693 cps	
24Mg	1,389.984 ppb	102,220,142 cps	
27Al	1,930.896 ppb	184,739,657 cps	
40Ca	-603.705 ppb	7,550,018,635 cps	
51V	4.002 ppb	425,924 cps	
52Cr	4.867 ppb	508,605 cps	
55Mn	44.953 ppb	7,463,389 cps	
56Fe	1,949.307 ppb	256,946,008 cps	

Category	Concentration average	Intensity average	Intensity RSD
58Ni	19.156 ppb	1,041,249 cps	
59Co	2.183 ppb	239,896 cps	
63Cu	24.264 ppb	1,247,435 cps	
64Zn	198.380 ppb	5,670,559 cps	
69Ga	1.239 ppb	162,983 cps	
75As	1.265 ppb	19,045 cps	
80Se	61.965 ppb	10,521,192 cps	
85Rb	4.393 ppb	614,648 cps	
88Sr	21.224 ppb	4,159,556 cps	
107Ag	0.225 ppb	23,332 cps	
114Cd	0.079 ppb	5,328 cps	
133Cs	0.350 ppb	80,744 cps	
138Ba	13.640 ppb	2,889,282 cps	
139La	1.357 ppb	341,994 cps	
140Ce	2.594 ppb	667,666 cps	
141Pr	0.306 ppb	105,916 cps	
142Nd	1.503 ppb	195,584 cps	
152Sm	0.234 ppb	24,264 cps	
153Eu	0.047 ppb	9,330 cps	
158Gd	0.235 ppb	20,767 cps	
164Dy	0.162 ppb	19,272 cps	
165Ho	0.026 ppb	10,461 cps	
166Er	0.080 ppb	13,027 cps	
169Tm	0.011 ppb	4,297 cps	
174Yb	0.059 ppb	8,209 cps	
175Lu	0.009 ppb	3,664 cps	
205Tl	0.024 ppb	5,171 cps	
208Pb	2.825 ppb	454,366 cps	
232Th	0.438 ppb	137,242 cps	
238U	0.102 ppb	34,133 cps	

Sample Summary

Instrument ID: iCAP Q

Analysis index: 17

Analysis name: 04745jian

Analysis started at: 8/25/2021 5:16:54 PM

User name: WINDOWS-UPCI4ER\Administrator

Category	Concentration average	Concentration RSD
9Be	0.082 ppb	
11B	5.360 ppb	
24Mg	1,897.752 ppb	
27Al	2,469.449 ppb	
40Ca	-638.712 ppb	
51V	4.960 ppb	
52Cr	6.121 ppb	
55Mn	56.552 ppb	
56Fe	2,758.756 ppb	
58Ni	28.822 ppb	
59Co	1.149 ppb	
63Cu	19.616 ppb	
64Zn	247.679 ppb	
69Ga	2.009 ppb	
75As	1.315 ppb	
80Se	98.102 ppb	
85Rb	5.084 ppb	
88Sr	88.242 ppb	
107Ag	0.075 ppb	
114Cd	0.088 ppb	
133Cs	0.432 ppb	
138Ba	25.193 ppb	
139La	1.889 ppb	
140Ce	3.545 ppb	
141Pr	0.436 ppb	
142Nd	2.061 ppb	
152Sm	0.312 ppb	
153Eu	0.071 ppb	
158Gd	0.316 ppb	
164Dy	0.198 ppb	
165Ho	0.036 ppb	
166Er	0.097 ppb	
169Tm	0.014 ppb	
174Yb	0.077 ppb	
175Lu	0.011 ppb	
205Tl	0.024 ppb	
208Pb	4.077 ppb	
232Th	1.038 ppb	
238U	0.404 ppb	

Category	Concentration average	Intensity average	Intensity RSD
9Be	0.082 ppb	1,593 cps	
11B	5.360 ppb	203,079 cps	
24Mg	1,897.752 ppb	139,502,393 cps	
27Al	2,469.449 ppb	236,218,527 cps	
40Ca	-638.712 ppb	7,608,853,395 cps	
51V	4.960 ppb	523,698 cps	
52Cr	6.121 ppb	624,254 cps	
55Mn	56.552 ppb	9,365,604 cps	
56Fe	2,758.756 ppb	360,263,540 cps	

Category	Concentration average	Intensity average	Intensity RSD
58Ni	28.822 ppb	1,553,051 cps	
59Co	1.149 ppb	128,596 cps	
63Cu	19.616 ppb	1,010,453 cps	
64Zn	247.679 ppb	7,070,601 cps	
69Ga	2.009 ppb	251,014 cps	
75As	1.315 ppb	19,742 cps	
80Se	98.102 ppb	10,704,482 cps	
85Rb	5.084 ppb	710,498 cps	
88Sr	88.242 ppb	17,195,769 cps	
107Ag	0.075 ppb	9,567 cps	
114Cd	0.088 ppb	5,778 cps	
133Cs	0.432 ppb	99,613 cps	
138Ba	25.193 ppb	5,192,086 cps	
139La	1.889 ppb	475,775 cps	
140Ce	3.545 ppb	912,286 cps	
141Pr	0.436 ppb	150,817 cps	
142Nd	2.061 ppb	268,123 cps	
152Sm	0.312 ppb	32,305 cps	
153Eu	0.071 ppb	13,931 cps	
158Gd	0.316 ppb	27,908 cps	
164Dy	0.198 ppb	23,502 cps	
165Ho	0.036 ppb	14,322 cps	
166Er	0.097 ppb	15,203 cps	
169Tm	0.014 ppb	5,481 cps	
174Yb	0.077 ppb	10,761 cps	
175Lu	0.011 ppb	4,474 cps	
205Tl	0.024 ppb	5,051 cps	
208Pb	4.077 ppb	652,307 cps	
232Th	1.038 ppb	323,293 cps	
238U	0.404 ppb	135,018 cps	

Sample Summary

Instrument ID: iCAP Q

Analysis index: 18

Analysis name: 04628ti

Analysis started at: 8/25/2021 5:18:41 PM

User name: WINDOWS-UPCI4ER\Administrator

Category	Concentration average	Concentration RSD
9Be	0.093 ppb	
11B	11.662 ppb	
24Mg	2,346.446 ppb	
27Al	2,958.407 ppb	
40Ca	-553.907 ppb	
51V	6.551 ppb	
52Cr	9.902 ppb	
55Mn	72.483 ppb	
56Fe	3,446.258 ppb	
58Ni	32.484 ppb	
59Co	1.477 ppb	
63Cu	22.889 ppb	
64Zn	163.362 ppb	
69Ga	1.809 ppb	
75As	1.879 ppb	
80Se	51.610 ppb	
85Rb	5.511 ppb	
88Sr	28.782 ppb	
107Ag	0.068 ppb	
114Cd	0.079 ppb	
133Cs	0.509 ppb	
138Ba	18.777 ppb	
139La	2.916 ppb	
140Ce	5.419 ppb	
141Pr	0.647 ppb	
142Nd	3.222 ppb	
152Sm	0.449 ppb	
153Eu	0.089 ppb	
158Gd	0.480 ppb	
164Dy	0.273 ppb	
165Ho	0.048 ppb	
166Er	0.144 ppb	
169Tm	0.017 ppb	
174Yb	0.097 ppb	
175Lu	0.014 ppb	
205Tl	0.030 ppb	
208Pb	2.673 ppb	
232Th	0.837 ppb	
238U	0.184 ppb	

Category	Concentration average	Intensity average	Intensity RSD
9Be	0.093 ppb	1,803 cps	
11B	11.662 ppb	375,790 cps	
24Mg	2,346.446 ppb	172,447,198 cps	
27Al	2,958.407 ppb	282,956,828 cps	
40Ca	-553.907 ppb	7,466,324,523 cps	
51V	6.551 ppb	686,106 cps	
52Cr	9.902 ppb	972,918 cps	
55Mn	72.483 ppb	11,978,216 cps	
56Fe	3,446.258 ppb	448,015,716 cps	

Category	Concentration average	Intensity average	Intensity RSD
58Ni	32.484 ppb	1,746,990 cps	
59Co	1.477 ppb	163,909 cps	
63Cu	22.889 ppb	1,177,339 cps	
64Zn	163.362 ppb	4,676,079 cps	
69Ga	1.809 ppb	228,183 cps	
75As	1.879 ppb	27,512 cps	
80Se	51.610 ppb	10,468,668 cps	
85Rb	5.511 ppb	769,689 cps	
88Sr	28.782 ppb	5,629,861 cps	
107Ag	0.068 ppb	8,877 cps	
114Cd	0.079 ppb	5,311 cps	
133Cs	0.509 ppb	117,252 cps	
138Ba	18.777 ppb	3,913,169 cps	
139La	2.916 ppb	734,296 cps	
140Ce	5.419 ppb	1,394,131 cps	
141Pr	0.647 ppb	223,630 cps	
142Nd	3.222 ppb	419,017 cps	
152Sm	0.449 ppb	46,453 cps	
153Eu	0.089 ppb	17,606 cps	
158Gd	0.480 ppb	42,419 cps	
164Dy	0.273 ppb	32,258 cps	
165Ho	0.048 ppb	18,928 cps	
166Er	0.144 ppb	21,378 cps	
169Tm	0.017 ppb	6,722 cps	
174Yb	0.097 ppb	13,487 cps	
175Lu	0.014 ppb	5,798 cps	
205Tl	0.030 ppb	6,485 cps	
208Pb	2.673 ppb	430,482 cps	
232Th	0.837 ppb	260,978 cps	
238U	0.184 ppb	61,452 cps	

Sample Summary

Instrument ID: iCAP Q

Analysis index: 19

Analysis name: 033892ti

Analysis started at: 8/25/2021 5:20:26 PM

User name: WINDOWS-UPCI4ER\Administrator

Category	Concentration average	Concentration RSD
9Be	0.030 ppb	
11B	6.270 ppb	
24Mg	729.826 ppb	
27Al	953.408 ppb	
40Ca	-465.185 ppb	
51V	2.324 ppb	
52Cr	3.721 ppb	
55Mn	22.291 ppb	
56Fe	1,077.390 ppb	
58Ni	11.133 ppb	
59Co	0.500 ppb	
63Cu	13.336 ppb	
64Zn	177.137 ppb	
69Ga	0.737 ppb	
75As	1.131 ppb	
80Se	69.241 ppb	
85Rb	2.464 ppb	
88Sr	11.246 ppb	
107Ag	0.212 ppb	
114Cd	0.053 ppb	
133Cs	0.162 ppb	
138Ba	8.300 ppb	
139La	0.765 ppb	
140Ce	1.523 ppb	
141Pr	0.173 ppb	
142Nd	0.872 ppb	
152Sm	0.129 ppb	
153Eu	0.027 ppb	
158Gd	0.129 ppb	
164Dy	0.080 ppb	
165Ho	0.015 ppb	
166Er	0.047 ppb	
169Tm	0.005 ppb	
174Yb	0.032 ppb	
175Lu	0.005 ppb	
205Tl	0.015 ppb	
208Pb	1.571 ppb	
232Th	0.239 ppb	
238U	0.106 ppb	

Category	Concentration average	Intensity average	Intensity RSD
9Be	0.030 ppb	580 cps	
11B	6.270 ppb	228,014 cps	
24Mg	729.826 ppb	53,748,849 cps	
27Al	953.408 ppb	91,304,019 cps	
40Ca	-465.185 ppb	7,317,213,157 cps	
51V	2.324 ppb	254,598 cps	
52Cr	3.721 ppb	402,936 cps	
55Mn	22.291 ppb	3,746,900 cps	
56Fe	1,077.390 ppb	145,655,228 cps	

Category	Concentration average	Intensity average	Intensity RSD
58Ni	11.133 ppb	616,412 cps	
59Co	0.500 ppb	58,818 cps	
63Cu	13.336 ppb	690,269 cps	
64Zn	177.137 ppb	5,067,267 cps	
69Ga	0.737 ppb	105,561 cps	
75As	1.131 ppb	17,195 cps	
80Se	69.241 ppb	10,558,095 cps	
85Rb	2.464 ppb	347,083 cps	
88Sr	11.246 ppb	2,218,814 cps	
107Ag	0.212 ppb	22,146 cps	
114Cd	0.053 ppb	4,007 cps	
133Cs	0.162 ppb	37,577 cps	
138Ba	8.300 ppb	1,824,946 cps	
139La	0.765 ppb	192,983 cps	
140Ce	1.523 ppb	392,390 cps	
141Pr	0.173 ppb	59,784 cps	
142Nd	0.872 ppb	113,570 cps	
152Sm	0.129 ppb	13,411 cps	
153Eu	0.027 ppb	5,314 cps	
158Gd	0.129 ppb	11,435 cps	
164Dy	0.080 ppb	9,570 cps	
165Ho	0.015 ppb	5,901 cps	
166Er	0.047 ppb	8,750 cps	
169Tm	0.005 ppb	2,097 cps	
174Yb	0.032 ppb	4,444 cps	
175Lu	0.005 ppb	1,910 cps	
205Tl	0.015 ppb	3,210 cps	
208Pb	1.571 ppb	256,183 cps	
232Th	0.239 ppb	75,656 cps	
238U	0.106 ppb	35,731 cps	

Sample Summary

Instrument ID: iCAP Q

Analysis index: 20

Analysis name: 046750ti

Analysis started at: 8/25/2021 5:22:12 PM

User name: WINDOWS-UPCI4ER\Administrator

Category	Concentration average	Concentration RSD
9Be	0.090 ppb	
11B	5.113 ppb	
24Mg	2,046.849 ppb	
27Al	2,707.889 ppb	
40Ca	-516.889 ppb	
51V	5.615 ppb	
52Cr	6.186 ppb	
55Mn	65.281 ppb	
56Fe	2,981.566 ppb	
58Ni	28.583 ppb	
59Co	1.286 ppb	
63Cu	13.265 ppb	
64Zn	204.997 ppb	
69Ga	1.683 ppb	
75As	1.520 ppb	
80Se	57.527 ppb	
85Rb	5.368 ppb	
88Sr	30.620 ppb	
107Ag	0.157 ppb	
114Cd	0.072 ppb	
133Cs	0.506 ppb	
138Ba	18.371 ppb	
139La	2.164 ppb	
140Ce	4.389 ppb	
141Pr	0.520 ppb	
142Nd	2.599 ppb	
152Sm	0.378 ppb	
153Eu	0.077 ppb	
158Gd	0.399 ppb	
164Dy	0.241 ppb	
165Ho	0.047 ppb	
166Er	0.118 ppb	
169Tm	0.017 ppb	
174Yb	0.090 ppb	
175Lu	0.015 ppb	
205Tl	0.030 ppb	
208Pb	2.228 ppb	
232Th	0.762 ppb	
238U	0.154 ppb	

Category	Concentration average	Intensity average	Intensity RSD
9Be	0.090 ppb	1,743 cps	
11B	5.113 ppb	196,312 cps	
24Mg	2,046.849 ppb	150,449,686 cps	
27Al	2,707.889 ppb	259,010,433 cps	
40Ca	-516.889 ppb	7,404,110,905 cps	
51V	5.615 ppb	590,515 cps	
52Cr	6.186 ppb	630,211 cps	
55Mn	65.281 ppb	10,797,195 cps	
56Fe	2,981.566 ppb	388,702,838 cps	

Category	Concentration average	Intensity average	Intensity RSD
58Ni	28.583 ppb	1,540,428 cps	
59Co	1.286 ppb	143,356 cps	
63Cu	13.265 ppb	686,676 cps	
64Zn	204.997 ppb	5,858,481 cps	
69Ga	1.683 ppb	213,790 cps	
75As	1.520 ppb	22,567 cps	
80Se	57.527 ppb	10,498,681 cps	
85Rb	5.368 ppb	749,973 cps	
88Sr	30.620 ppb	5,987,295 cps	
107Ag	0.157 ppb	17,022 cps	
114Cd	0.072 ppb	4,948 cps	
133Cs	0.506 ppb	116,519 cps	
138Ba	18.371 ppb	3,832,250 cps	
139La	2.164 ppb	545,157 cps	
140Ce	4.389 ppb	1,129,493 cps	
141Pr	0.520 ppb	179,738 cps	
142Nd	2.599 ppb	337,937 cps	
152Sm	0.378 ppb	39,138 cps	
153Eu	0.077 ppb	15,123 cps	
158Gd	0.399 ppb	35,270 cps	
164Dy	0.241 ppb	28,506 cps	
165Ho	0.047 ppb	18,754 cps	
166Er	0.118 ppb	17,966 cps	
169Tm	0.017 ppb	6,708 cps	
174Yb	0.090 ppb	12,580 cps	
175Lu	0.015 ppb	5,901 cps	
205Tl	0.030 ppb	6,305 cps	
208Pb	2.228 ppb	360,018 cps	
232Th	0.762 ppb	237,760 cps	
238U	0.154 ppb	51,624 cps	

Sample Summary

Instrument ID: iCAP Q

Analysis index: 21

Analysis name: 179212ti

Analysis started at: 8/25/2021 5:23:58 PM

User name: WINDOWS-UPCI4ER\Administrator

Category	Concentration average	Concentration RSD
9Be	0.084 ppb	
11B	4.736 ppb	
24Mg	2,110.205 ppb	
27Al	2,739.727 ppb	
40Ca	-517.413 ppb	
51V	5.949 ppb	
52Cr	6.127 ppb	
55Mn	68.520 ppb	
56Fe	3,186.451 ppb	
58Ni	29.947 ppb	
59Co	1.425 ppb	
63Cu	14.383 ppb	
64Zn	192.975 ppb	
69Ga	1.711 ppb	
75As	1.407 ppb	
80Se	39.068 ppb	
85Rb	4.986 ppb	
88Sr	32.878 ppb	
107Ag	0.027 ppb	
114Cd	0.063 ppb	
133Cs	0.473 ppb	
138Ba	18.354 ppb	
139La	2.209 ppb	
140Ce	4.002 ppb	
141Pr	0.495 ppb	
142Nd	2.437 ppb	
152Sm	0.374 ppb	
153Eu	0.076 ppb	
158Gd	0.373 ppb	
164Dy	0.243 ppb	
165Ho	0.044 ppb	
166Er	0.119 ppb	
169Tm	0.016 ppb	
174Yb	0.095 ppb	
175Lu	0.014 ppb	
205Tl	0.031 ppb	
208Pb	2.061 ppb	
232Th	0.671 ppb	
238U	0.143 ppb	

Category	Concentration average	Intensity average	Intensity RSD
9Be	0.084 ppb	1,617 cps	
11B	4.736 ppb	185,962 cps	
24Mg	2,110.205 ppb	155,101,486 cps	
27Al	2,739.727 ppb	262,053,765 cps	
40Ca	-517.413 ppb	7,404,991,345 cps	
51V	5.949 ppb	624,599 cps	
52Cr	6.127 ppb	624,793 cps	
55Mn	68.520 ppb	11,328,320 cps	
56Fe	3,186.451 ppb	414,854,195 cps	

Category	Concentration average	Intensity average	Intensity RSD
58Ni	29.947 ppb	1,612,613 cps	
59Co	1.425 ppb	158,319 cps	
63Cu	14.383 ppb	743,641 cps	
64Zn	192.975 ppb	5,517,065 cps	
69Ga	1.711 ppb	216,921 cps	
75As	1.407 ppb	21,001 cps	
80Se	39.068 ppb	10,405,054 cps	
85Rb	4.986 ppb	696,891 cps	
88Sr	32.878 ppb	6,426,600 cps	
107Ag	0.027 ppb	5,174 cps	
114Cd	0.063 ppb	4,487 cps	
133Cs	0.473 ppb	109,075 cps	
138Ba	18.354 ppb	3,828,889 cps	
139La	2.209 ppb	556,318 cps	
140Ce	4.002 ppb	1,029,775 cps	
141Pr	0.495 ppb	171,031 cps	
142Nd	2.437 ppb	316,884 cps	
152Sm	0.374 ppb	38,734 cps	
153Eu	0.076 ppb	14,999 cps	
158Gd	0.373 ppb	32,974 cps	
164Dy	0.243 ppb	28,787 cps	
165Ho	0.044 ppb	17,582 cps	
166Er	0.119 ppb	18,163 cps	
169Tm	0.016 ppb	6,602 cps	
174Yb	0.095 ppb	13,220 cps	
175Lu	0.014 ppb	5,841 cps	
205Tl	0.031 ppb	6,678 cps	
208Pb	2.061 ppb	333,649 cps	
232Th	0.671 ppb	209,448 cps	
238U	0.143 ppb	48,026 cps	

Sample Summary

Instrument ID: iCAP Q

Analysis index: 22

Analysis name: 15028jian

Analysis started at: 8/25/2021 5:25:45 PM

User name: WINDOWS-UPCI4ER\Administrator

Category	Concentration average	Concentration RSD
9Be	0.013 ppb	
11B	0.919 ppb	
24Mg	567.955 ppb	
27Al	419.465 ppb	
40Ca	-375.888 ppb	
51V	1.418 ppb	
52Cr	2.174 ppb	
55Mn	15.171 ppb	
56Fe	447.007 ppb	
58Ni	4.573 ppb	
59Co	0.227 ppb	
63Cu	16.974 ppb	
64Zn	186.302 ppb	
69Ga	0.459 ppb	
75As	0.688 ppb	
80Se	48.521 ppb	
85Rb	3.051 ppb	
88Sr	7.934 ppb	
107Ag	0.074 ppb	
114Cd	0.085 ppb	
133Cs	0.076 ppb	
138Ba	6.210 ppb	
139La	0.423 ppb	
140Ce	0.801 ppb	
141Pr	0.095 ppb	
142Nd	0.479 ppb	
152Sm	0.068 ppb	
153Eu	0.012 ppb	
158Gd	0.067 ppb	
164Dy	0.043 ppb	
165Ho	0.007 ppb	
166Er	0.008 ppb	
169Tm	0.003 ppb	
174Yb	0.016 ppb	
175Lu	0.002 ppb	
205Tl	0.007 ppb	
208Pb	1.370 ppb	
232Th	0.150 ppb	
238U	0.025 ppb	

Category	Concentration average	Intensity average	Intensity RSD
9Be	0.013 ppb	270 cps	
11B	0.919 ppb	81,341 cps	
24Mg	567.955 ppb	41,863,714 cps	
27Al	419.465 ppb	40,265,746 cps	
40Ca	-375.888 ppb	7,167,135,772 cps	
51V	1.418 ppb	162,035 cps	
52Cr	2.174 ppb	260,219 cps	
55Mn	15.171 ppb	2,579,226 cps	
56Fe	447.007 ppb	65,193,637 cps	

Category	Concentration average	Intensity average	Intensity RSD
58Ni	4.573 ppb	269,064 cps	
59Co	0.227 ppb	29,358 cps	
63Cu	16.974 ppb	875,774 cps	
64Zn	186.302 ppb	5,327,541 cps	
69Ga	0.459 ppb	73,767 cps	
75As	0.688 ppb	11,098 cps	
80Se	48.521 ppb	10,453,000 cps	
85Rb	3.051 ppb	428,579 cps	
88Sr	7.934 ppb	1,574,526 cps	
107Ag	0.074 ppb	9,464 cps	
114Cd	0.085 ppb	5,598 cps	
133Cs	0.076 ppb	17,729 cps	
138Ba	6.210 ppb	1,408,452 cps	
139La	0.423 ppb	106,735 cps	
140Ce	0.801 ppb	206,793 cps	
141Pr	0.095 ppb	32,786 cps	
142Nd	0.479 ppb	62,517 cps	
152Sm	0.068 ppb	7,062 cps	
153Eu	0.012 ppb	2,394 cps	
158Gd	0.067 ppb	5,891 cps	
164Dy	0.043 ppb	5,208 cps	
165Ho	0.007 ppb	2,880 cps	
166Er	0.008 ppb	3,647 cps	
169Tm	0.003 ppb	1,273 cps	
174Yb	0.016 ppb	2,177 cps	
175Lu	0.002 ppb	933 cps	
205Tl	0.007 ppb	1,567 cps	
208Pb	1.370 ppb	224,468 cps	
232Th	0.150 ppb	48,243 cps	
238U	0.025 ppb	8,486 cps	

Sample Summary

Instrument ID: iCAP Q

Analysis index: 23

Analysis name: 15024jian

Analysis started at: 8/25/2021 5:27:36 PM

User name: WINDOWS-UPCI4ER\Administrator

Category	Concentration average	Concentration RSD
9Be	0.016 ppb	
11B	10.826 ppb	
24Mg	592.047 ppb	
27Al	481.039 ppb	
40Ca	-349.184 ppb	
51V	1.554 ppb	
52Cr	2.398 ppb	
55Mn	16.647 ppb	
56Fe	448.478 ppb	
58Ni	4.840 ppb	
59Co	0.212 ppb	
63Cu	6.948 ppb	
64Zn	190.034 ppb	
69Ga	0.505 ppb	
75As	0.724 ppb	
80Se	38.547 ppb	
85Rb	2.390 ppb	
88Sr	8.801 ppb	
107Ag	0.037 ppb	
114Cd	0.076 ppb	
133Cs	0.085 ppb	
138Ba	7.236 ppb	
139La	0.388 ppb	
140Ce	0.673 ppb	
141Pr	0.081 ppb	
142Nd	0.395 ppb	
152Sm	0.063 ppb	
153Eu	0.013 ppb	
158Gd	0.065 ppb	
164Dy	0.042 ppb	
165Ho	0.008 ppb	
166Er	0.002 ppb	
169Tm	0.003 ppb	
174Yb	0.018 ppb	
175Lu	0.002 ppb	
205Tl	0.009 ppb	
208Pb	0.856 ppb	
232Th	0.101 ppb	
238U	0.024 ppb	

Category	Concentration average	Intensity average	Intensity RSD
9Be	0.016 ppb	313 cps	
11B	10.826 ppb	352,889 cps	
24Mg	592.047 ppb	43,632,637 cps	
27Al	481.039 ppb	46,151,436 cps	
40Ca	-349.184 ppb	7,122,255,985 cps	
51V	1.554 ppb	175,915 cps	
52Cr	2.398 ppb	280,932 cps	
55Mn	16.647 ppb	2,821,241 cps	
56Fe	448.478 ppb	65,381,359 cps	

Category	Concentration average	Intensity average	Intensity RSD
58Ni	4.840 ppb	283,211 cps	
59Co	0.212 ppb	27,751 cps	
63Cu	6.948 ppb	364,555 cps	
64Zn	190.034 ppb	5,433,545 cps	
69Ga	0.505 ppb	79,003 cps	
75As	0.724 ppb	11,585 cps	
80Se	38.547 ppb	10,402,411 cps	
85Rb	2.390 ppb	336,869 cps	
88Sr	8.801 ppb	1,743,172 cps	
107Ag	0.037 ppb	6,031 cps	
114Cd	0.076 ppb	5,178 cps	
133Cs	0.085 ppb	19,993 cps	
138Ba	7.236 ppb	1,612,939 cps	
139La	0.388 ppb	97,882 cps	
140Ce	0.673 ppb	173,891 cps	
141Pr	0.081 ppb	27,951 cps	
142Nd	0.395 ppb	51,497 cps	
152Sm	0.063 ppb	6,512 cps	
153Eu	0.013 ppb	2,680 cps	
158Gd	0.065 ppb	5,788 cps	
164Dy	0.042 ppb	5,131 cps	
165Ho	0.008 ppb	3,327 cps	
166Er	0.002 ppb	2,870 cps	
169Tm	0.003 ppb	1,343 cps	
174Yb	0.018 ppb	2,457 cps	
175Lu	0.002 ppb	917 cps	
205Tl	0.009 ppb	1,873 cps	
208Pb	0.856 ppb	143,111 cps	
232Th	0.101 ppb	33,031 cps	
238U	0.024 ppb	8,076 cps	